



## 2019 PRODUCT CATALOG

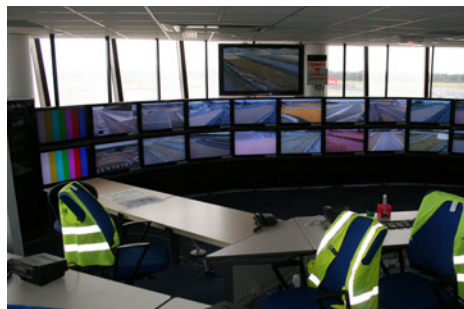


Specializing in Connectivity of Video, Audio, and USB via Fiber, CATx, and IP

**ROSE.COM**  
**281-933-7673**

Rose Electronics has been in business for 35 years. Founded by engineers with backgrounds in the oil and gas industry and IC chip design, the company adopts a philosophy of building highly reliable products at a fair price. The company is headquartered in Houston, Texas with offices in Europe and Asia.

Rose specializes in switching, extension, and processing of video, audio, and data with transport using copper, fiber, or IP. The customer base spans a wide variety of industries in the commercial, industrial, and ProAV space. Solutions encompass broadcast, command and control, data centers, digital signage, education, entertainment, financial, government, house of worship, medical, military, presentation venues, retail, security, transportation, and others.



**CONTACT US**    **281-933-7673**    **800-333-9343**    **SALES@ROSE.COM**

**HEADQUARTERS**  
10707 Stancliff Road  
Houston, Texas 77099

281-933-7673  
800-333-9343  
sales@rose.com

**NORTHERN EUROPE**  
+49 2454 969442  
germansales@rose.com

**SOUTHERN EUROPE**  
+34 9386 63795  
spainsales@rose.com

**ASIA**  
+65 6324 2322  
asiasales@rose.com

**AUSTRALIA**  
+61 0421 247083  
australiansales@rose.com

PAGES

# Table of Contents

## 01 Switches

- 01 Multi-User KVM Switches
- 06 Single-User KVM Switches
- 07 AV Switches

## 09 Extenders

- 09 KVM Extenders
- 13 AV Extenders
- 14 Active Optical Cables
- 15 USB Extenders

## 16 Video Wall Processors

## 17 Multiviewers

## 18 Video Splitters

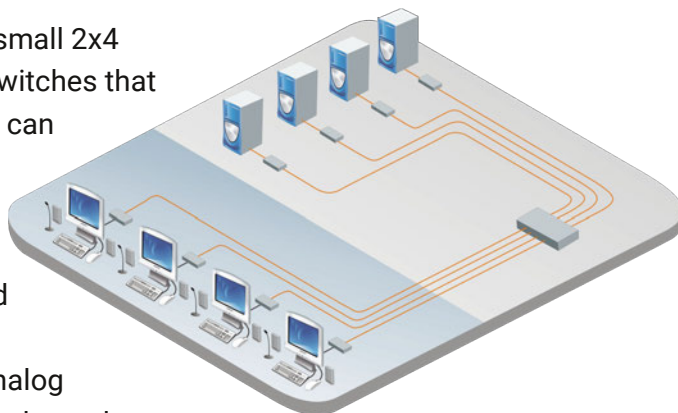
## 19 Rack Drawers

## 20 Accessories



# Multi-User KVM Matrix Switches

Rose provides a full range of matrix switches, from small 2x4 desktop switches to enterprise digital KVM matrix switches that can support thousands of ports. Matrix architecture can use analog or digital switching backplanes or can use IP-based switching utilizing 1G or 10G Ethernet switches. An extensive range of video formats is supported including HDMI, DisplayPort, SDI, DVI, and VGA with resolutions up to 4K60. Audio may be embedded with the video or be separate digital or analog formats. Data may be USB 3.1, USB 2.0, serial, infrared, or others.



Product	Video	Cabling	Computers	Users	Audio
Orion X	HDMI, DisplayPort, SDI, DVI-D, DVI-I/VGA, Dual-link DVI	CATx/Fiber	1-575	1-575	Option
Orion XC	HDMI, DisplayPort, SDI, DVI-D, DVI-I/VGA, Dual-link DVI	CATx/Fiber	1-79	1-79	Option
UltraLink 10G	HDMI, Optional: DisplayPort, 12G-SDI	CATx/Fiber	Unlimited	Unlimited	✓
Xcion	HDMI	CATx	1-48	1-48	No
Xcion	DVI-I	CATx/Fiber	1-48	1-48	Option
Xcion+	DVI-I	CATx/Fiber	1-2,000	1-2,000	✓
Xtensys	VGA	CATx	1-64	1-16	No
UltraMatrix E-Series	VGA	Coax	1-16	1-4	No

## Orion X Series

### Modular Enterprise KVM Matrix Switch

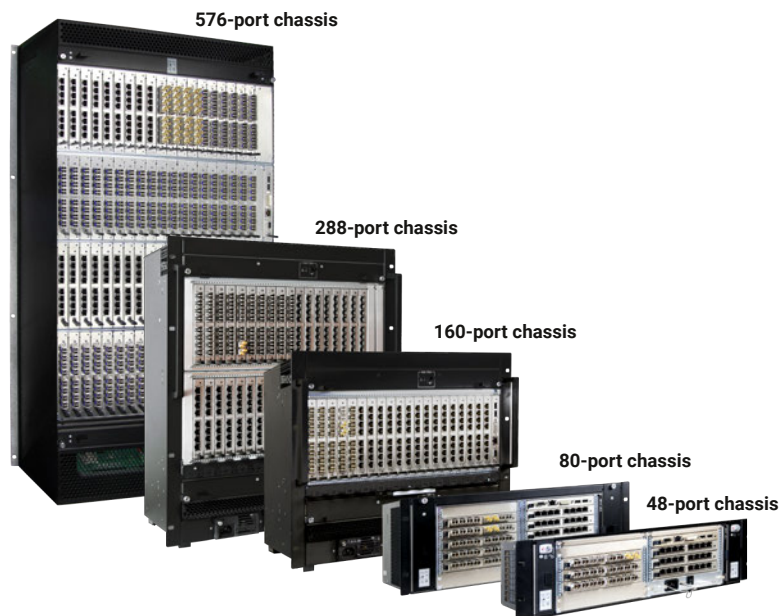
Orion X series is a sophisticated switching system with many versatile features. It is a three-component system consisting of transmitters at the video or computer source, a central switch, and receivers at the user station or display.

The Orion X switch chassis is very scalable, accepting 8-port I/O cards. The cards, as well as the transmitters and receivers, are available with either CATx or fiber interfaces. Each port of the switch is automatically configured to be an input or an output port depending on whether a transmitter or receiver unit is connected to it. This simplifies your system planning, because you do not have to decide in advance how many input or output ports – only the total number of ports.

Software utilities have been developed to enhance the functionality of the product. The utilities available are:

- JAVA Tool, Extended Switching and Presets
- Additional API
- SNMP and Syslog for unit monitoring
- Cascading / Stacking
- Multi-Screen Control

Chassis Sizes		
Ports	Cards (8-port)	Rack Size
48	6	3U
80	10	4U
160	20	9U
288	36	13U
576	72	25U



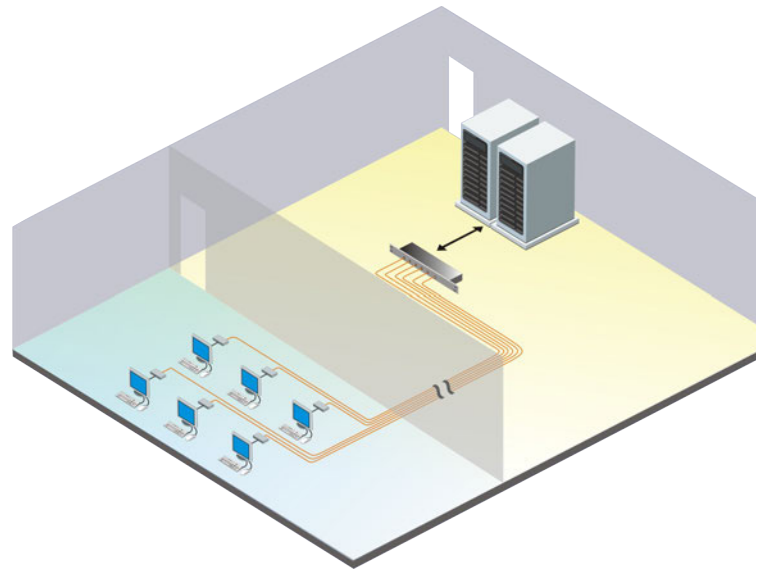
# Orion XC Series

## Fixed Enterprise KVM Matrix Switch

Orion XC is a fixed port version of the Orion X series switches. The Orion XC switch is available in a range of 1U and 2U chassis with a fixed port configuration. This reduces the cost and makes the unit more compact. It is a three-component system consisting of transmitters at the video or computer source, a central switch, and receivers at the user station or display.

The available link interface formats are CATx, single-mode fiber with 1G (1.25 Gbps) or 2.5G (3.125 Gbps) high-speed SFPs, or universal ports, which can support either SDI or USB 3.0.

There are various arrangements of interface ports with all CATx, all fiber, all universal, or mixed versions in the 64-port and 80-port switches.



Same Port Models				
	Ports	All CATx	All Fiber	All Universal
	8	✓	✓	✓
	16	✓	✓	✓
	32	✓	✓	✓
	48	✓	✓	✓
	64	✓	✓	✓
	80	✓	✓	✓



Mixed Port Models			
	Total Ports	CATx Ports	Fiber Ports
	64	48	16
	80	48	32
	Total Ports	CATx Ports	Universal Ports
	64	48	16
	80	48	32
	Total Ports	Fiber Ports	Universal Ports
	64	48	16
	80	48	32



# UltraLink 10G 4K NEW PRODUCT

Video, USB, Audio over 10G Ethernet

UltraLink 10G gives you the power and flexibility to easily build simple or complex high performance KVM or AV applications. Transmitter units are cabled to video sources or computers. Receiver units are cabled to displays or user stations. All units are then connected to a central 10G Ethernet switch. This IP based distributed any-to-any matrix switch contains video memory, which gives it advanced features, such as visually lossless or uncompressed video resolution, seamless

switching, video wall functionality, and multiviewer capabilities at each display. Switching and control is based on a secure web server architecture to make access and control available from any device with a web browser. This product is suitable for broadcast stations, entertainment venues, digital signage, industrial sites, military bases, airports and train stations, office environments, and many other applications.

- Connect over fiber to 33,000 ft (10 km) or CATx to 330 ft (100 m)
- Video resolution up to 4K60
- Extremely low video latency
- Transparent and switchable high-speed USB 2.0
- Supports HDMI, and optional DisplayPort or 12G-SDI inputs
- Seamless switching gives instant display change
- Flexible audio architecture – embedding, de-embedding, and down-mixing of HDMI and analog audio
- Every display can be a multiviewer
- Build video walls from multiple receivers and displays
- Infrared, serial, and headset support are standard
- Transmitter has built-in video loop-out with multiple inputs
- Receiver has built-in KVM switch function
- 1G Ethernet LAN port to connect computers to 10G network
- Switching and control from wall panels, computers, mobile phones, or OSD and hot-keys
- Based on SDVoE technology



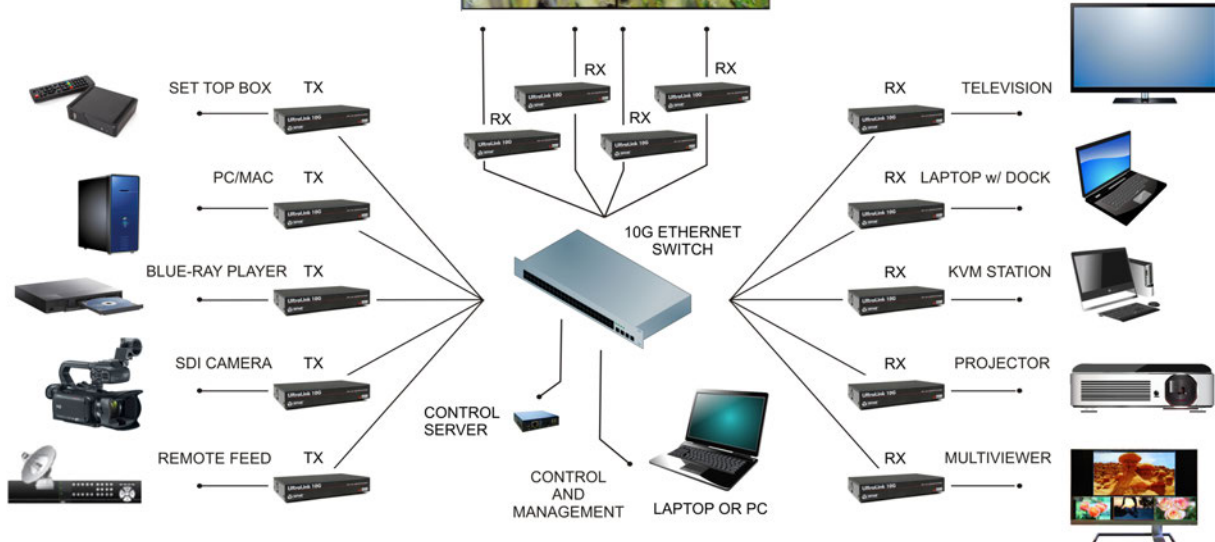
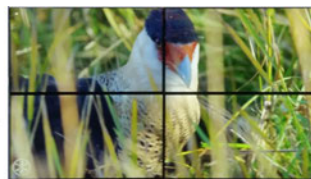
Front View



Back View  
Transmitter (top) and Receiver (bottom)



VIDEO WALL





## Xcion

### Switchable KVM Extender in CATx or Fiber

Supports HDMI or DVI/VGA, USB 2.0, audio, and serial  
 Units function as extenders when connected point-to-point, or as a switch when connected to a gigabit Ethernet switch  
 Switch mode supports up to 48 Xcion endpoints  
 Manage connections by OSD menu or through the Xcion Switch Manager software

## UPGRADE OPTIONS

These features are pre-installed on the extenders, and they are enabled by entering quick activation codes.

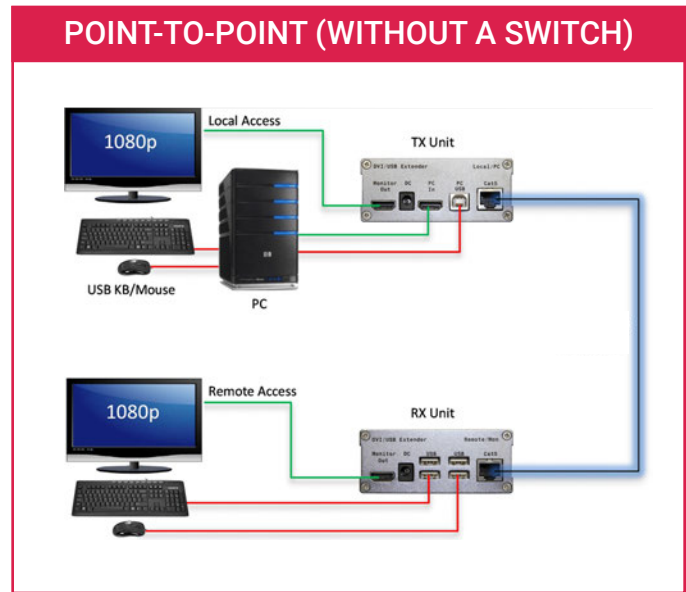
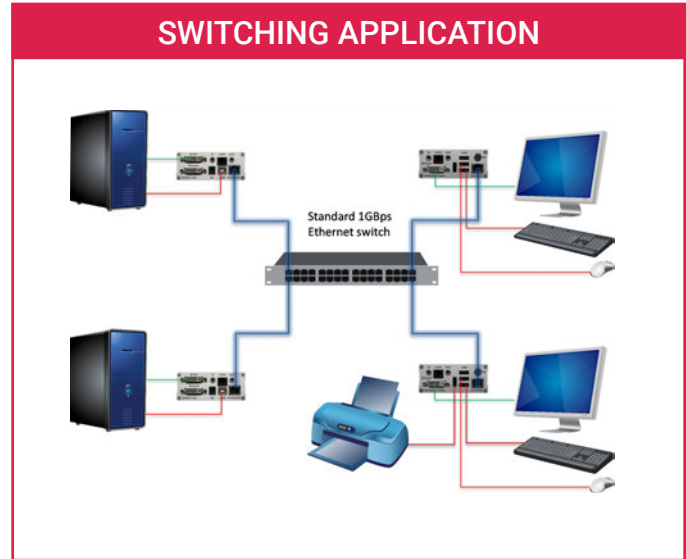
- Matrix Switching System (Up to 48 endpoints)
- Bi-directional analog stereo audio and RS-232
- USB memory - support for memory sticks and hard drives
- Analog VGA video input - transmitted as DVI



## Xcion+

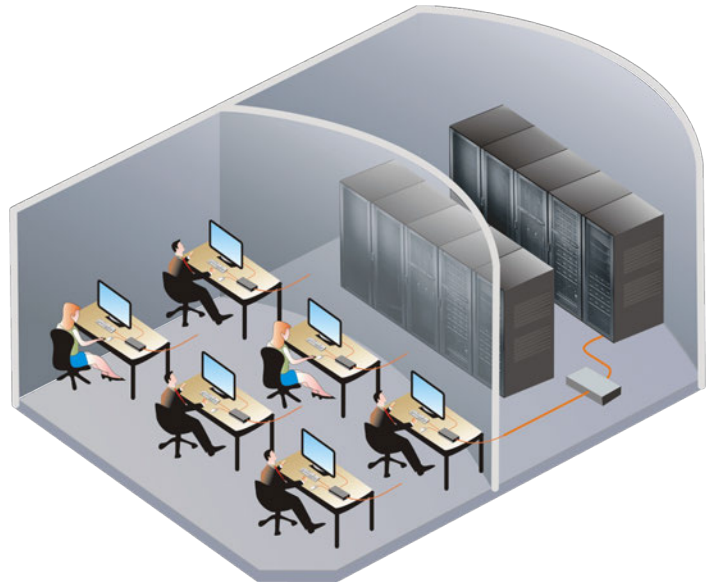
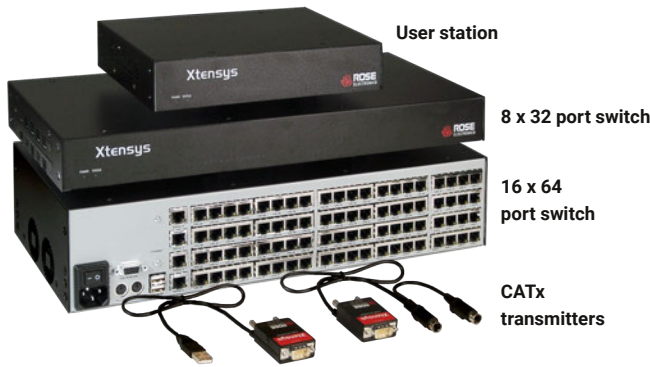
### CATx or Fiber Extender

Full-featured KVM Extender  
 Includes ALL features of the original Xcion  
 Includes ALL activated upgrade options  
 Expanded switching matrix supports up to 2,000 end-points  
 Switching Manager software



\* For more information on Xcion extension specifications, including maximum distances and video resolution, go to page 12.

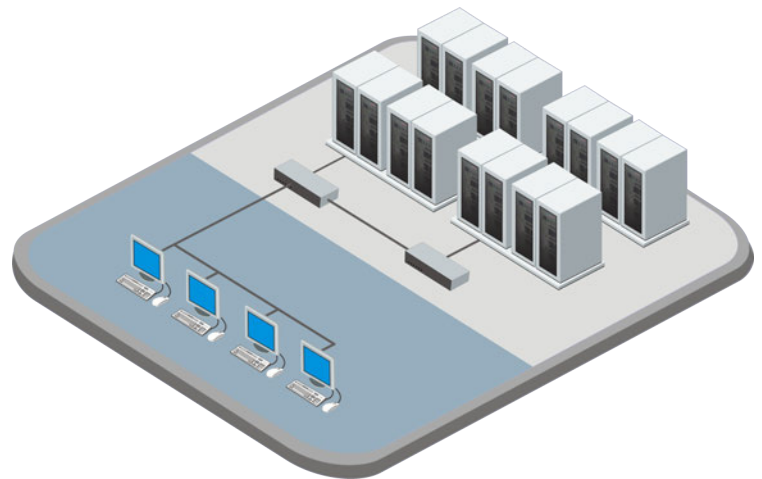
Product	Video	Cabling	Computers	Users	Audio
Xcion	HDMI	CATx	1-48	1-48	No
Xcion	DVI-I	CATx	1-48	1-48	Option
Xcion	DVI-I	Fiber	1-48	1-48	Option
Xcion+	DVI-I	CATx	1-2,000	1-2,000	✓
Xcion+	DVI-I	Fiber	1-2,000	1-2,000	✓



## Xtensys

### VGA over CATx KVM Switch

- Connect multiple users to multiple computers using CATx cable
- Models for 1-16 users and 1-64 CPUs
- Locate switches up to 1,000 ft (300 m) from computers
- Auto equalization and skew compensation for perfect VGA display
- Multi-platform keyboard and mouse support: USB, PS/2
- Serial terminal support
- Each computer port can connect to a computer or serial device
- Advanced security features
- Configuration and access through on-screen display (OSD)
- Local port for quick access to the switch



## UltraMatrix E-Series

### 1-4 User KVM Switch, VGA, USB, PS/2

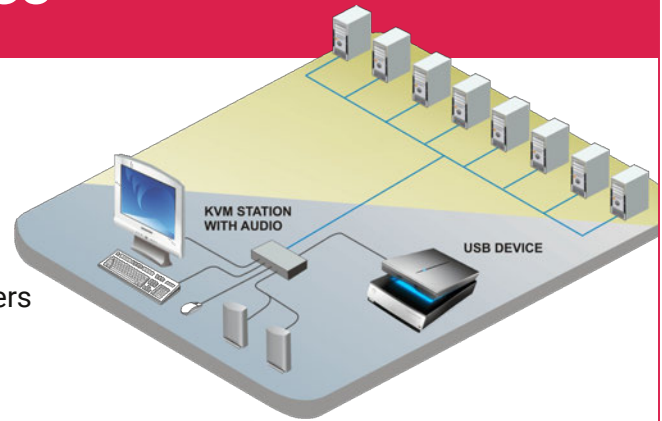
- Up to 4 users can access and control up to 1,000 computers and network devices
- VGA video resolution up to 1920x1200, and PS/2 or USB keyboard and mouse
- Fixed port configurations and plug-in expansion ensures low system cost and makes the system easy to expand and maintain
- Switching can be done from hot-key, OSD, or serial port
- Multi-platform units have serial VT220 terminal emulation for access to UNIX hosts, routers, and other serial devices
- Security system with login and computer group lists prevents unauthorized configuration and access
- Advanced on-screen display (OSD) makes configuration easy and informs you of status with user-friendly messages
- Status screen shows inter-box communication, current connections, computer power, and other information
- Flash memory for free firmware upgrades with product enhancements and new software features are available at [www.rose.com](http://www.rose.com)
- Rackmount kits available in 19", 23", and 24" sizes

UltraMatrix E-Series Models	
Users	Computers
1	8
1	16
2	4
2	8
2	16
4	8
4	16



# Single-User KVM Switches

Rose offers an extensive portfolio of desktop and rackmount KVM switches for connecting from two to hundreds of computers to a single KVM console. They are available in HDMI, DVI, DisplayPort, and VGA with combined USB and audio in resolutions up to 4K60. Users can switch between computers using a keyboard, front panel, on-screen display (OSD), or RS-232 port.



Product	Video	Cabling	Connectors	Computers	Max. Resolution	Heads
MultiVideo	HDMI	HDMI, USB, Audio, Serial	HDMI, USB A/B, 3.5mm jack, DB9(F)	4	4K @ 60	2, 4
MultiVideo	DisplayPort	DisplayPort, USB, Audio, Serial	DisplayPort, USB A/B, 3.5mm jack, DB9(F)	4	4K @ 60	2, 4
MultiVideo	Dual-link DVI	DVI, USB, Audio	DVI(F), USB A/B, 3.5mm jack	4	3840x2160 @ 30	2, 3, 4
MultiVideo	VGA	Coax	DB25	2, 4, 8	1920x1200 @ 60	2, 4
XtenSys Compact	VGA	CATx	RJ45	2, 4, 8	1920x1200 @ 60	1
Vista	HDMI	HDMI, USB, Audio, Serial	HDMI (F), USB A/B, 3.5mm jack, DB9(F)	4	4K @ 60	1
Vista	DisplayPort	DisplayPort, USB, Audio, Serial	DisplayPort, USB A/B, 3.5mm jack, DB9(F)	4	4K @ 30	1
Vista	DVI-I	DVI, USB, Audio	DVI(F), USB A/B, 3.5mm jack	8	1920x1200 @ 60	1
Vista Plus	Dual-link DVI-I	DVI, USB, Audio	DVI(F), USB A/B, 3.5mm jack	4, 8	3840x2160 @ 30	1
Vista LC	DVI	DVI, USB, Audio	DVI(F), USB A/B, 3.5mm jack	12	1920x1200 @ 60	1
Vista Mini	VGA	VGA, PS/2, Audio	HD15(F), Mini-din6, 3.5mm jack	2	1920x1200 @ 60	1
Vista KM III	No Video	USB, Audio	USB, 3.5mm jack	4, 8	No Video	1
UltraView	DVI	DVI, USB, Audio	DVI(F), USB A/B, 3.5mm jack	16	1920x1200 @ 60	1
UltraView Pro	VGA	Coax	DB25	4, 8, 12, 16	1920x1200 @ 60	1

## MultiVideo

4K



### 1x4 Multi-Head KVM Switch

Dual-head or quad-head video input

DisplayPort or HDMI video in or out

Resolution up to 3840x2160

HDMI, DisplayPort, or analog audio support

Switch CPU peripherals together or independently

Supports USB 2.0 devices and USB-HID devices



HDMI Dual-head

## Secure KVM Switches

### Full Range of Products

NIAP certified

HDMI, DisplayPort, and DVI

2-port, 4-port, and 8-port

Single, dual, or quad-head

Optional CAC port

Secure EDID learning

Learn more at ROSE.COM



# AV Switches

AV matrix switches route multiple audio/video sources (computers, cameras, media players, Blu-ray Disc players, etc.) to multiple output displays (flat panel displays, projectors, video conference codecs, etc.). Matrix switches can route any input to any output or to multiple outputs at the same time.



Product	Video	Output Resolution	Distance	Input/Output
UltraMatrix AV Pro	HDMI, HDBaseT, 3G-SDI, DVI, Fiber, VGA	3840x2160 @ 30	100 ft	8x8, 16x16, 32x32, 64x64, 144x144
UltraMatrix AV	HDMI	1920x1200 @ 60	20 ft	16x16
UltraMatrix AV	DVI	1920x1200 @ 60	20 ft	4x4, 8x8, 16x16
UltraMatrix AV	VGA	1920x1200 @ 60	50 ft	8x8, 16x16, 16x32
Vista AV	DVI	1920x1200 @ 60	20 ft	2x1, 4x1, 8x1, 16x1

## UltraMatrix AV

### AV Matrix Switch

Video resolution up to 1080p

Supports 7.1 Digital Surround Sound audio

"Learn Mode" acquires the EDID information for any output monitor, once learned, the monitors do not have to be connected for the computers to boot  
Switch a video source to any output monitor using either the front panel push buttons, remote matrix switching software, optional IR controller, or serial commands to the unit

Intuitive RoseControl software makes switching, routing, and controlling the video displays quick and easy

Optional Ethernet interface for control over network

HDCP compliant

Rack mount options



HDMI 16 x 16





## UltraMatrix AV Pro 4K 4K UHD Modular Matrix Switch

The UltraMatrix AV Pro is a high performance audio and video cross-point switch connecting any input to any output, including seamless switching from older legacy video formats.

- Automatic built-in scaling and conversion
- 4-port modular I/O card design
- Supports any mix of HDMI, HDBaseT, 3G-SDI, DVI, VGA, and audio
- 4K video resolution is supported through HDMI
- High-bandwidth up to 10.2 Gbps
- Control by front panel, LAN, IR, or serial
- Smart EDID management
- HDCP compliant
- Dual internal power supplies
- Available in 8x8, 16x16, 32x32, 64x64, and 144x144 port models

1. Select a Chassis
2. Choose Input Cards
3. Choose Output Cards
4. Add on Extender units as required



**HDBaseT Transmitter and Receiver Units**



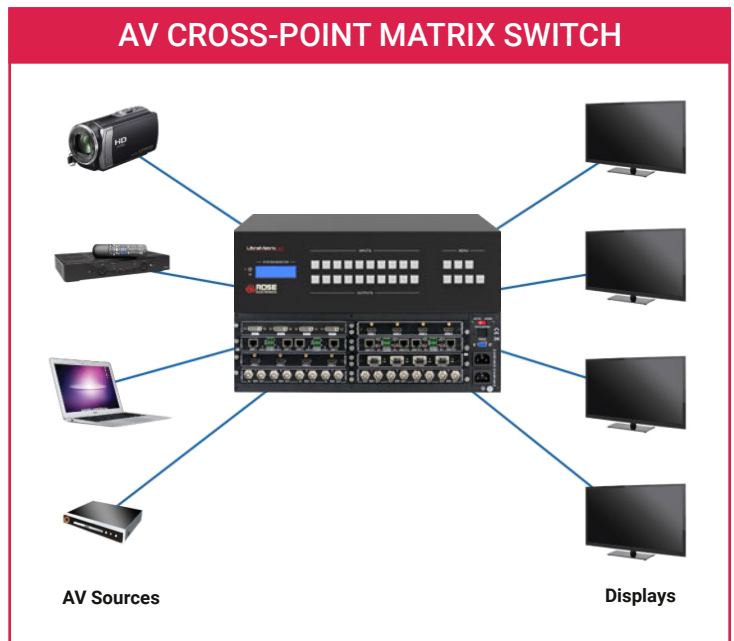
**Fiber Transmitter and Receiver Units**

HDBaseT transmitter and receiver units are used with the HDBaseT input and output cards to connect the switch and extender units up to 233 ft (70 m) over a single CATx cable.

Fiber transmitter and receiver units utilizing SFP modules with single LC connectors are used with fiber input and output cards to connect the switch and extender units. Multi-mode fiber can reach up to 1,000 ft (300 m). Single-mode fiber can reach up to 1.2 miles (2 km).

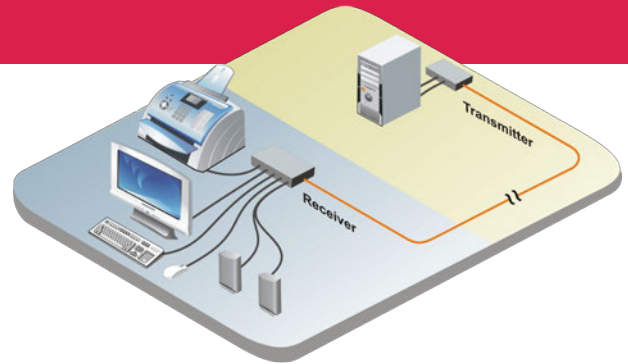
Chassis Sizes		
Input Ports	Output Ports	Rack Size
8	8	2U
16	16	3U
32	32	5U
64	64	10U
144	144	25U

4-Port Input & Output Cards		
SDI	HDMI	HDBaseT
DVI	VGA and Audio	Fiber



# KVM Extenders

Extenders form a huge product segment for Rose. Video, USB, serial, audio, or others may be separate or combined. Transmission media may be IP, CATx, fiber, coax, hybrid, or wireless.



Extender	Video	Cabling	Distance	Max. Resolution	Audio
Orion XTender	HDMI	CATx/Fiber	460ft/3,300ft/33,000ft	3840x2160 @ 60	Option
Orion XTender	DisplayPort	CATx/Fiber	460ft/3,300ft/33,000ft	3840x2160 @ 60	Option
Orion XTender	Dual-link DVI	CATx/Fiber	460ft/3,300ft/33,000ft	3840x2160 @ 30	Option
Orion XTender	Single-link DVI	CATx/Fiber	460ft/3,300ft/33,000ft	1920x1200 @ 60	Option
Orion XTender	DVI-I (VGA)	CATx/Fiber	460ft/3,300ft/33,000ft	1920x1200 @ 60	Option
Orion XTender	SDI	CATx/Fiber	460ft/3,300ft/33,000ft	1920x1080 @ 60	Option
Xcion	HDMI	CATx	500ft	1920x1200 @ 60	No
Xcion	DVI-I	CATx/Fiber	492ft/1,640ft/65,600ft	1920x1200 @ 60	Option
Xcion+	DVI-I	CATx/Fiber	492ft/1,640ft/65,600ft	1920x1200 @ 60	✓
CrystalView Exact	DisplayPort	CATx	330ft	3840x2160 @ 60	✓
CrystalView EX	HDMI	CATx	330ft	3840x2160 @ 30	✓
CrystalView EX	DVI	CATx	330ft	1920x1200 @ 60	Via USB
CrystalView EX Multi	HDMI x 1-4	CATx	330ft	1920x1200 @ 60	Option
CrystalView EX Multi	DVI x 1-4	CATx	330ft	1920x1200 @ 60	Option
CrystalView	DVI	CATx	460ft	1920x1200 @ 60	Option
CrystalView	DVI	Fiber	MM:1,300/SM:33,000ft	1920x1200 @ 60	Option
CrystalView Quad	DVI x 1-4	CATx	460ft	1920x1200 @ 60	Option
CrystalView Quad	DVI x 1-4	Fiber	MM:3,300ft/SM:33,000ft	1920x1200 @ 60	Option
CrystalView Pro	DVI-D, DVI-I (VGA)	Fiber	MM:1,640ft/SM:33,000ft	1920x1200 @ 60	Option
CrystalView USB2	VGA	CATx	330ft	1920x1200 @ 60	Option
CrystalView Plus USB	VGA	CATx	1,000ft	1600x1200 @ 60	Option
CrystalView CAT5	VGA	CATx	1,000ft	1600x1200 @ 60	Option
CrystalView Mini USB	VGA	CATx	150ft	1600x1200 @ 60	Option
ViewLink	VGA	CATx	1,000ft	1920x1200 @ 60	No

# Orion XTender 4K

## Modular CATx/Fiber Extender 2/4/6/21-Card Chassis

The modular design of the Orion XTender allows users to extend desktop control of remote computers or to relocate them in a secure and managed space away from desktop, control room, or hazardous environments.

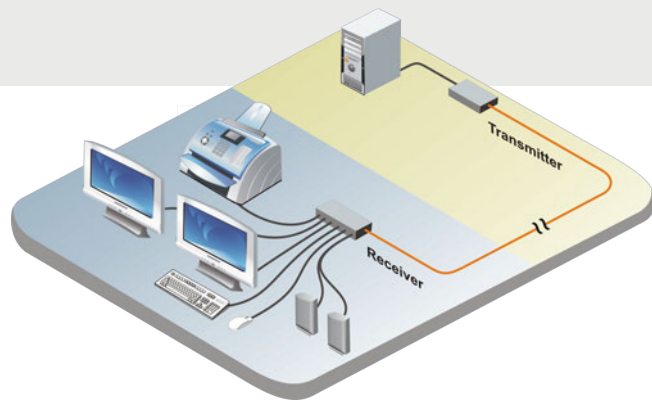
Whether you need single, dual, or quad-head video displays with control from a USB or PS/2 keyboard, mouse, or touchscreen, this modular and feature packed family can be configured to fit your needs.

Run them point to point or connect them to an Orion-X or Orion-XC switch. Now you can route your video, audio, and USB control to whatever destination you desire. Your source and destination video format need not be the same.

A wide range of chassis sizes with provision for redundant power make the Orion XTender a versatile product. You can use the larger sizes where multiple sources are in the same location and use the smaller units throughout your facility near user work stations.

Connection status LED's are located on the front panel to indicate the operating status of the unit. The chassis are all rack mountable and all connectors are on the same side of the chassis for convenience and ease of access.

Common applications include control rooms, broadcast studios, outside broadcast vans, concert and theatre venues, AV distribution, medical imaging, and other industrial/military applications.



### EXTEND YOUR KVM STATIONS AND COMPUTERS

- Up to 460 ft (140 m) using CATx cable
- Up to 3,300 ft (1 km) using multi-mode fiber
- Up to 33,000 ft (10 km) using single-mode fiber

### VIDEO INTERFACES AVAILABLE

- HDMI and DisplayPort video up to 4K @ 60Hz
- Single-link DVI video up to 1920x1200 @ 60Hz
- Dual-link DVI video up to 4K @ 30Hz
- Dual-head DVI video using one cable up to 1920x1200 @ 60Hz
- DVI-I (VGA) video up to 1920x1200 @ 60Hz with optional scaling
- SDI video up to 1920x1080p

### OTHER INTERFACES AVAILABLE

- USB-HID, USB 2.0, and USB 3.0 devices
- PS/2 keyboard and mouse
- Serial RS-232 and RS-422, up to 115.2 Kbps
- Analog stereo microphone and speaker
- Digital audio (Mini-XLR, Coaxial, Optical)
- Intel OPS displays
- IP access via the Orion XT IP Box

### OTHER OPTIONS AVAILABLE

- Redundant power
- Redundant link



Select enclosure



Select main module(s)











Select add-on module(s)




21-card chassis




2-card, 4-card, and 6-card chassis

Orion XTender Standard Modules	
	
HDMI, USB, CATx	HDMI, USB, Fiber
	
DisplayPort, USB, CATx	DisplayPort, USB, Fiber
	
DVI-D, USB, CATx	DVI-D, USB, Fiber
	
SDI, CATx	SDI, Fiber
Orion XTender Add-on Modules	
Dual-link/Dual-head	USB 2.0
Analog Audio	USB-HID
Digital Audio	RS-232
Push Button	RS-422
Redundant Link	PS/2
SNMP Monitoring	Ethernet


ORION XTENDERS



**HDMI and USB over CATx in 2-card chassis  
Transmitter with local video loop out**



**DisplayPort, USB, Serial, and Audio  
over Fiber in 6-card chassis**



**DVI, PS/2, USB, Serial, and audio  
over Fiber in 6-card chassis**

## CrystalView Exact

### DisplayPort, USB, LAN Extender

Extends DisplayPort 1.2, USB 3.1/2.0/1.1, and Gbit Ethernet on CATx to 330 ft (100 m)  
 Supports 4K60 video and USB 3.1 gen 1 data up to 5 Gbps  
 Four USB-A Gen 1 ports on the receiver unit, each with 1.5A power  
 Expandable to 30 ports with the use of USB hubs  
 Optimum performance with CAT6a and CAT7 (solid core) UTP/STP cabling

4K



## CrystalView EX

### HDMI or DVI, USB 2.0

Extends HDMI or DVI video and USB 2.0 up to 330 ft (100 m)  
 Uncompressed video resolution up to 3840x2160 on HDMI  
 Video resolution for DVI up to 1920x1200  
 Three remote high-speed USB 2.0 device ports supplying 500 mA power  
 USB 2.0 throughput of up to 40 Mbps  
 Use USB keyboards, mice, printers, scanners, flash drives, and other devices

4K



HDMI



DVI

## CrystalView EX Multi

### Multi-head CATx Extender, HDMI or DVI, USB 2.0, Audio

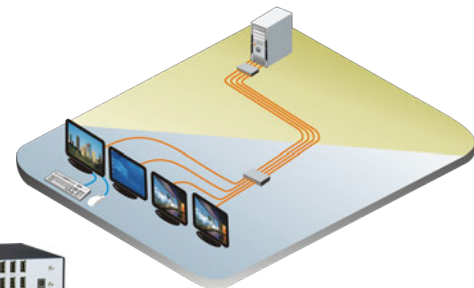
Extends up to four video signals and USB 2.0 up to 330 ft (100 m)  
 Uncompressed video resolution up to 1920x1200  
 Three high speed USB 2.0 device ports supplying 500 mA power  
 USB 2.0 throughput of up to 40 Mbps  
 Supports audio via USB or optional dedicated channel  
 Use USB keyboards, mice, printers, scanners, flash drives, audio devices, touch screens, web cams, game controllers, and more



DVI Dual-head



HDMI Quad-head





DVI over CATx      HDMI over CATx      DVI over Fiber

## Xcion

### CATx/Fiber Extender, HDMI/DVI, USB 2.0, Audio, Serial

Full HD digital or analog video 1920x1200 @ 60Hz  
 Units can run point-to-point or through a gigabit Ethernet switch  
 Extend multi-mode fiber up to 1,640 ft (500 m)  
 Single-mode fiber up to 12.4 mi (20 km)  
 CATx extension up to 492 ft (150 m)



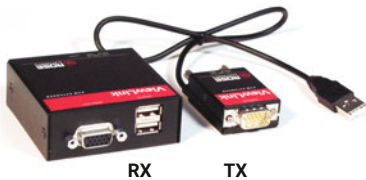
DVI/CATx



## Xcion+

### CATx/Fiber Extender, DVI/VGA, USB 2.0, Audio, Serial

Full-featured KVM Extender  
 Includes ALL features of the original Xcion  
 Includes ALL activated upgrade options  
 Expanded switching matrix supports up to 2,000 end-points  
 Switching Manager software for simplified control and switching



RX      TX

## ViewLink

### Miniature CATx Extender VGA, USB & PS/2

Video resolution up to 1920x1200 at 300 ft (90 m)  
 1024x768 at 1,000 ft (300 m)  
 Automatic equalization provides clear video over any type of CATx cable  
 Optional automated video skew adjustments for different pair lengths in cable  
 Video-only and touchscreen models available

## EXPANDABLE EXTENDERS

Xcion and Xcion+ extenders support point-to-point extension, LAN extension, and any to any LAN matrix configurations.

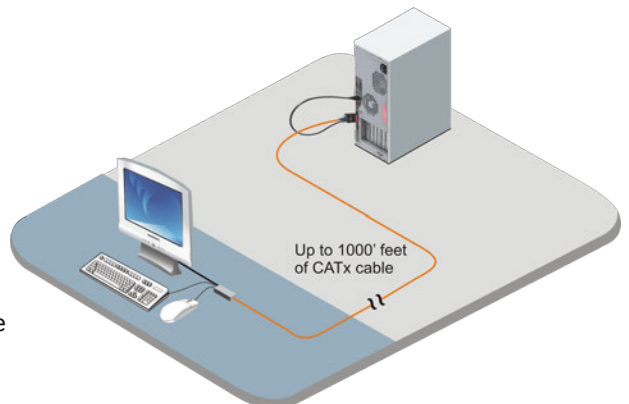
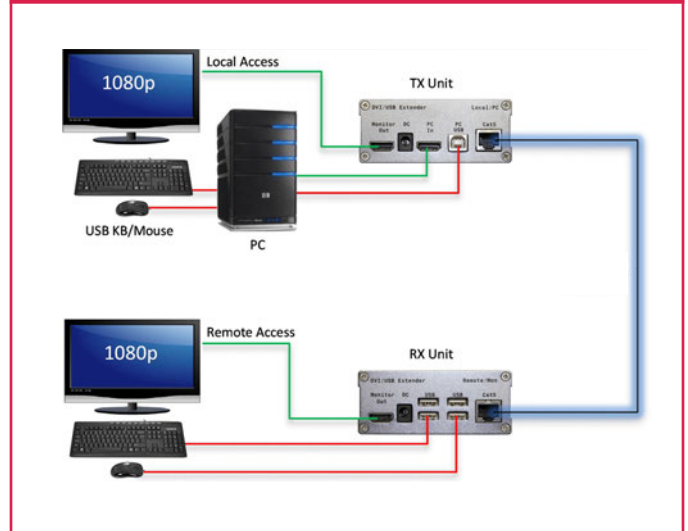
See Multi-User KVM Switches section on page 4 for more details.

## XCION UPGRADE OPTIONS

These features are pre-installed on the extenders, and they are enabled by entering quick activation codes.

- Matrix Switching System (Up to 48 endpoints)
- Bi-directional analog stereo audio and RS-232
- USB memory - support for memory sticks and hard drives
- Analog VGA video - transmitted as DVI

## POINT-TO-POINT



# Audio/Video Extenders

Rose has a diverse portfolio of audio/video extenders that extend HDMI, DisplayPort, DVI, and VGA video sources and audio signals over CATx, fiber, and active optical cables.

Extender	Video	Cabling	Distance	Max. Resolution	Audio
Extensiv Active Optical Cable	HDMI 2.0/2.1	Fiber	30-330 ft	7680x4320 @ 60	✓
Extensiv Active Optical Cable	DisplayPort 1.4	Fiber	30-330 ft	7680x4320 @ 30	✓
Extensiv Active Optical Cable	DP 1.2 to HDMI 2.0	Fiber	100 ft	3840x2160 @ 60	✓
Extensiv Active Optical Cable	DVI	Fiber	30-330 ft	2560x1600 @ 30	No
Extensiv Active Optical Cable	USB C to HDMI (HDMI 1.4b Alt Mode)	Fiber	100 ft	3840x2160 @ 30	✓
Extensiv Active Optical Cable	USB C to USB C (DP 1.2 Alt Mode)	Fiber	100 ft	3840x2160 @ 60	✓
CrystalView HDBaseT HDMI	HDMI	CATx	330 ft	3840x2160 @ 60	✓
CrystalView Micro HDMI	HDMI	Fiber	3,280 ft	3840x2160 @ 60	✓
CrystalView Micro LT	Single-link DVI	Fiber	MM: 4,920 ft / SM: 1,640 ft	1920x1200 @ 60	No
CrystalView Micro DL	Dual-link DVI	Fiber	MM: 1,000 ft	3840x2160 @ 30	No
CrystalView Micro	Single-link DVI	Fiber	MM: 1,000 ft	1920x1200 @ 60	No



## CrystalView Micro HDMI

### 4K60 HDMI Fiber Extender

- Up to 1 km on a single OM4 multi-mode fiber
- HDMI and embedded audio up to 4K60
- Full DDC and CEC pass through
- Use existing fiber installation with or without patch panels
- Plug-and-play installation
- LED indicates status of link and verifies operation



## CrystalView Micro DL

### Compact DVI Fiber Extender

- Supports dual-link DVI-D video
- Connects directly to DVI ports
- Video resolution up to 3840x2400 @ 24 Hz
- Extends up to 1,000 ft (300 m)
- Dual SC type connection to two-strand multi-mode fiber cable
- Auto-detect EDID information



## CrystalView HDBaseT HDMI

### 4K60 HDMI HDBaseT Extender

- Extends HDMI signals to 330 ft (100 m) using CAT6 cable and HDBaseT technology
- Resolutions up to 4K60 and 1080p60
- Bi-directional IR and RS-232 interfaces
- Supports HDCP 2.2, 3D video, and HDMI audio
- Power-over-Cable (PoC) for remote unit power



## CrystalView Micro LT

### Compact DVI Fiber Extender

- Supports single-link DVI-D video
- Video resolution up to 1920x1200 @ 60 Hz
- Connects directly to DVI ports
- Duplex LC type connectors
- Extend up to 4,920 ft (1,500 m) over single-mode fiber cable
- Extend up to 1,640 ft (500 m) over multi-mode fiber cable
- Auto-detect EDID information

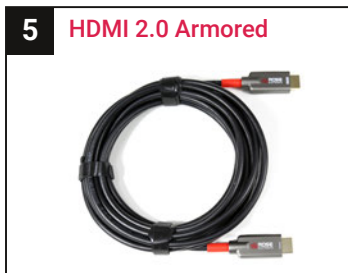
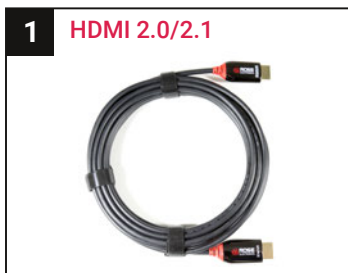


# Extensiv Active Optical Cables

This revolutionary state-of-the-art optical cable family transmits high resolution video, audio, and data up to 100 m. All of the optics and electronics are embedded into the cable head to provide a sleek and streamlined installation. No external power supply is needed because all of the power is supplied by the interface. Unlike the traditional concept of using a transmitter and receiver unit at each end, you just plug the cable in like a regular cable. Rose produces a wide variety of AOC cables in HDMI, DisplayPort, DVI, and USB.

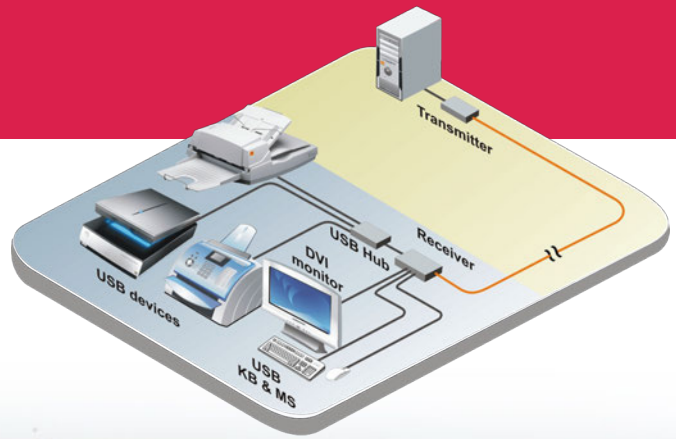
Lengths of 33 ft (10 m), 66 ft (20 m), 100 ft (30 m), 165 ft (50 m), 230 ft (70 m), and 330 ft (100 m) are available. Jackets can be plenum rated (CMP), low smoke zero halogen (LSZH), or armored. Detachable style removes the cable head from either end to allow running the cable through a conduit. These products are perfect for digital signage, presentation venues, hotel and restaurant, medical facilities, retail locations, board rooms, industrial settings, military sites, and many other environments.

	Media	Resolution /Speed	Source/Host Connector	Display/Device Connector	Comments
1	HDMI 2.0	4K60	HDMI A	HDMI A	All HDMI cables support HDCP, ARC, and Ethernet.
1	HDMI 2.1	8K60	HDMI A	HDMI A	Latest very high resolution 8K60 interface.
2	DVI	All	DVI	DVI	Supports all single-link DVI resolutions, also comes in detachable.
3	DisplayPort 1.4	8K30	DisplayPort	DisplayPort	For 8K60 resolution use two cables.
4	HDMI 2.0 Detachable	4K60	HDMI A/D	HDMI A/D	Detachable comes with pulling cover and HDMI A to D adapters.
4	DP 1.4 Detachable	8K30	DP/Mini-DP	DP/Mini-DP	Detachable comes with pulling cover and mini-DP to DP adapters.
5	HDMI 2.0 Armored	4K60	HDMI A	HDMI A	Armored - very rugged, also comes in detachable.
6	DP 1.2 to HDMI 2.0	4K60	DisplayPort	HDMI A	Converts DisplayPort 1.2 to HDMI 2.0.
7	USB C to HDMI 1.4b	4K30	USB C	HDMI A	USB C Alt Mode HDMI 1.4b video/audio only.
8	DP 1.2 over USB C	4K60	USB C	USB C	USB C Alt Mode DisplayPort 1.2 video/audio only.
9	USB 3.1	Gen 1 (5G)	USB A male	USB A female/male	Provides power to remote device. Does not extend USB 2.0.
10	USB 3.1/2.0	Gen 1 (5G)/2.0	USB A male	USB A female	Provides power to remote device. Extends USB 3.1 and USB 2.0.
11	USB 3.1 Pure Optical	Gen 1 (5G)	USB A male	USB A male	Pure optical cable. Does not provide power to remote device.
12	USB 3.1/2.0 Hub	Gen 1 (5G)/2.0	USB A female	USB A female	4-port hub converts USB 3.1 to USB 3.1+USB 2.0.



# USB Extenders

Rose has a diverse portfolio of USB extenders that allow USB ports on devices to be extended over CATx, fiber, active optical cables, or active copper cables. Rose has solutions that support, USB 1.1, 2.0, and 3.1 Gen 1.



Extender	Cabling	Distance	USB Version	USB Ports
Extensiv USB 3.1 Active Optical Cable	Fiber	33 - 330 ft	3.1 Gen 1, 2.0, Alt Mode	1
CrystalLink USB 3.1 Active Copper Cable	Copper	50 ft	3.1 Gen 1	1
CrystalLink USB 3-2-1	CATx/Fiber	330 ft/660 ft	3.1 Gen 1, 2.0, 1.0	4
CrystalLink USB 3.1 Dual Port	Fiber	330 ft	3.1 Gen 1	2
CrystalLink USB 2.0	CATx/Fiber	330 ft/1,640 ft/33,000 ft	2.0, 1.1	4
CrystalLink USB 2.0 CATx Dual Port	CATx	330 ft	2.0, 1.1	2
CrystalLink USB 2.0 Flex Power	CATx	330 ft	2.0, 1.1	1

## CrystalLink USB 3-2-1

### USB 3.1 Extenders

USB 3.1 gen 1 data rate up to 5 Gbps  
 Supports all USB 3.1, 2.0, and 1.1 devices simultaneously at full bandwidth  
 Integrated 4-port USB hub  
 100/1000 Ethernet channel extension  
 Secure, isolated, high-speed extension  
 Plug-and-play product, no drivers or jumpers  
 Supports all major operating systems



Multi-mode fiber up to 660 ft (200 m)  
 CAT6a/CAT7 up to 330 ft (100 m)



## CrystalLink USB 3.1 Active Copper Cable

### USB 3.1 Extender to 50 ft (15 m)

Supports speeds up to 5 Gbps  
 Powered by the USB host  
 Supplies 900 mA current  
 LED indicates status  
 Plug and play  
 Rugged industrial design



## CrystalLink USB 3.1 Dual Port

### USB 3.1 Fiber Extender

Extends USB 3.1 devices up to 330 ft (100 m)  
 Uncompromised throughput of USB 3.1 gen 1 rate of 5 Gbps  
 Uses standard 50/125µm multi-mode fiber cable terminated with one duplex LC type connector  
 Fiber cable ensures high-speed transmission, electrical isolation, high reliability, and transmission security  
 The transmitter unit is USB interface powered



## CrystalLink USB 2.0

### USB 2.0 CATx/Fiber Extender

Extends USB 2.0 to 330 ft (100 m) over CATx  
 1,640 ft (500 m) over multi-mode fiber cable  
 33,000 ft (10 km) over single-mode fiber cable  
 Four remote USB 2.0 device ports supplying 500 mA power  
 USB 2.0 throughput of up to 480 Mbps  
 Use USB keyboards, mice, printers, scanners, flash drives, audio devices, touch screens, web cams, game controllers, and other devices



# Video Wall Processors

Rose portfolio of video wall processors support both HD and 4K environments with fixed port and modular options. Cost effective plug and play solutions provide you with the flexibility to support a variety of applications.



Product	Input Max. Resolution	Output Max. Resolution	Configuration	Max. System
UltraVista Pro	DVI-D Dual-link: 3840x2160 @ 30 DVI-D Single-link: 1920x1200 @ 60	DVI-D Dual-link: 3840x2160 @ 30 DVI-D Single-link: 1920x1200 @ 60	Ethernet Serial port	Any via Plug-in cards
UltraVista 4K	DVI-D Dual-link: 4096x2160 @ 30 HDMI 4K: 4096x2160 @ 30 DisplayPort 1.1a: 3840x2400 @ 30	DVI: 1920x1200 @ 60	Ethernet Serial port	Any via cascade
UltraVista 4K60	HDMI: 4K @ 60 (4:2:0 10 bits) HDMI: 4K @ 60 (4:4:4 8 bits)	DVI: 1920x1200 @ 60	Ethernet Serial port IR Control	Any via splitter
UltraVista Plus	DVI-D Dual-link: 2560x2048 @ 60 others at reduced frame rate DVI-D Single-link: 1920x1200 @ 60	DVI-I/VGA: 1920x1200 @ 60	USB port	1x4, 2x2, 4x1



## UltraVista Pro 4K

### Video Wall Image Processor

Hardware based, OS-free architecture for real time quality and reliability  
 Input video input formats include VGA, YpbPr, CVBS, DVI Single-link, DVI Dual-link, HDMI, SDI, and DisplayPort  
 Output video in VGA, DVI Single-link, DVI Dual-link, HDMI, and SDI  
 Input and output resolutions up to 1920x1200 @ 60Hz or 3840x2400 @ 30Hz for 4K cards  
 HDMI inputs are HDCP compliant  
 Multi-screen management to support displays with different resolutions  
 Control software supports user presets and user preview of all inputs  
 Background underlay on to which video tiles can be laid  
 Fonts, color, and size of on-screen display (OSD) can be edited  
 Seamless switching with millisecond response time  
 Bezel compensation

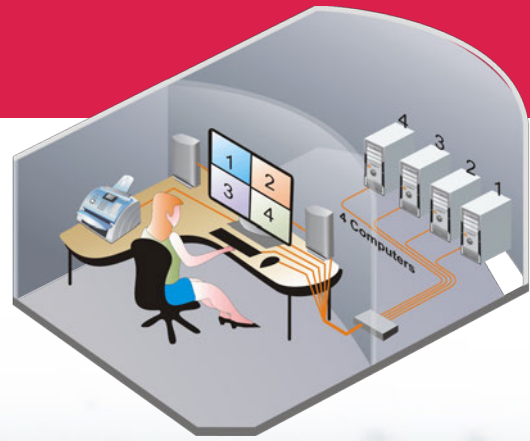
## UltraVista 4K60 4K

### UHD Video Wall Processor, 4K60

Output resolution from 640x480 to 1920x1200 in 2x2 format  
 Input resolution HDMI 4K2K@60Hz (YUV 4:4:4)  
 Each DVI/HDMI output has an independent controllable display area  
 Resize, position and zoom the video output  
 Stereo audio output is provided  
 EDID from the default resolution table or from direct connection  
 Controller software is included, and software management via the USB or Ethernet ports  
 Image parameters and layouts can be saved in flash memory and recalled for later use  
 Supports IR remote control  
 HDCP compliant

# Multiviewers

Rose provides multiviewers that take multiple video sources from computers, DVD/Blu-ray players, cameras, etc. and tile them in multiple formats on a single screen or video wall. Optional KVM switching between computer sources is also available.



Product	Video	Resolution	KVM Control	Audio
QuadraVista 4K60	HDMI	4K60 4:4:4	No	✓
QuadraVista	HDMI	1920x1200 @ 60	✓	✓
QuadraVista QF	DVI	1920x1200 @ 60	✓	✓
QuadraVista II	DVI	1920x1200 @ 60	✓	No



## QuadraVista QF

### 4 HDMI/DVI/VGA Inputs + Digital Audio

Connect four VGA, DVI, or HDMI sources with USB or PS/2 keyboard/mouse

Supports 10-bit color for maximum video clarity

Display video sources in quad, picture-in-picture, full, or windowed mode with name of source

Switch a USB 2.0 device or Dolby 7.1 output from any computer

Can be controlled from keyboard, mouse, front panel, USB, serial port, or touchscreen

Audio input from HDMI sources, digital and analog audio output

Four USB 2.0 ports for printers, memory sticks, and other high-speed devices



## QuadraVista HDMI 4K60



### 4K60, Front Panel Presets

Displays up to four HDMI video sources on a single monitor

Input resolutions from 640x480 @ 60Hz to 1920x1200 @ 60Hz

Supports HDMI 2.0 output resolution up to 4K60 (4:4:4 8 bits)

Window size and position are software adjustable

HDCP 1.4 compliant

Analog stereo audio output

Output display parameters such as layout, resolution, titles, and borders are software controllable

Up to eight different layouts can be saved

Resize, position, zoom, pan, and blend output video

Configure output through RS-232 or Ethernet

28-key IR remote control

Rotation of input image by +90° or -90°

Supports pixel by pixel mapping in a 2x2 configuration

Automatically upscale 1920x1080 @ 60Hz output resolution to 4K2K

Two EDID selections, and custom EDID can be loaded from a file

Firmware updates via configuration software

Software management package included with the product

# Video Splitters

Rose video splitters support HDMI, DVI, or VGA. The remote displays may be directly connected or extended over CATx or active optical cables. Units can be daisy chained to support additional displays.



Product	Video	Max. Resolution	Distance	Outputs	Audio
VideoSplitter HDMI/HDBaseT	HDMI	4K @ 60	130 ft (4K60), 230 ft (1080p)	4	✓
VideoSplitter HDMI 4K60	HDMI	4K @ 60	10 ft	2, 4, 8	✓
VideoSplitter HDMI PT	HDMI	4K @ 30	10 ft	2	✓
VideoSplitter DVI Audio	DVI	1920x1200 @ 60	33 ft	2, 4	✓
VideoSplitter DVI (No Audio)	DVI	1920x1200 @ 60	33 ft	2, 4, 8	No
CrystalView DVI Multi	DVI	1920x1200 @ 60	220 ft	2, 4, 8	No
VideoSplitter VGA	VGA	1920x1200 @ 60	50 ft	2, 4, 8, 12, 16	No
VideoSplitter VGA CAT5	VGA	1920x1200 @ 60	1,000 ft	6, 12	Option



4K

## VideoSplitter HDMI/HDBaseT

### 1x4 HDMI 4K60

Distributes and extends one HDMI 2.0 source with IR and RS-232 to four extended distance displays up to 230 ft away

HDMI input and CATx/HDBaseT output to receivers near displays

Receivers are powered by the video splitter

One HDMI loop out for local display or to cascade additional units for increased number of displays

HDCP 2.2 compliant

EDID management



4K

## VideoSplitter HDMI 4K60

### 2, 4, or 8 HDMI outputs

Distribute a single HDMI video signal to multiple displays

Supports HDMI video up to 4K @ 60 Hz 4:4:4 8 bits

HDCP 2.2 / 1.4 compliant

Rotary dial to setup built-in EDID or EDID learning from display

Cascading feature to increase number of output displays

# KVM Rack Drawers

These products are used in data centers, broadcast, Pro AV, and digital signage applications. Available in a wide variety of formats, they support up to 4K60 video resolution.



Product	Resolution						LCD Size					
	3840x2160	1920x1200	1920x1080	1600x1200	1440x900	1280x1024	17"	19"	20"	21"	23"	24"
RackView 4K	✓	✓	✓				✓					
RackView				✓		✓	✓	✓	✓			
RackView Widescreen	✓		✓		✓		✓	✓				
RackView Dual Rail	✓	✓	✓			✓	✓	✓				
RackView Sideways	✓	✓	✓								✓	✓
RackView LCD Drawer	✓	✓	✓	✓	✓	✓	✓	✓	✓			
RackView LCD Panel Mount	✓	✓	✓	✓	✓	✓	✓	✓	✓	✓	✓	✓
RackView Multi-Display	✓		✓			✓	✓	✓				



## RackView 4K 4K

**Ultra High Definition**  
 3840x2160 native resolution  
 DisplayPort 1.2 video input  
 Supports 1920x1080, 1920x1200



## RackView

**KVM Rack Drawer**  
 HDMI, DVI, VGA, or S-Video input  
 Optional touchscreen



## RackView Dual Rail

**Dual Rail Feature**  
 Independent sliding keyboard and LCD



## RackView Sideways 4K

**High Resolution LCD**  
 Innovative sideways sliding drawer  
 Left or right-side opening  
 3840x1080 available in 23" LCD



## RackView Widescreen 4K

**Wide Format Display**  
 DVI or VGA video input  
 USB keyboard and touchpad or trackball



## RackView Multi-Display 4K

**Triple or Dual Screen**  
 Right or left mounted dual display  
 2U 22" short depth design



## RackView 4K LCD Panel Mount

### Rack Mounted LCD

Available in 17", 19", 20", 21", 23", and 24" models with widescreen, HD, and touchscreen formats



## RackView 4K LCD Drawer

### Foldaway LCD Drawer

Available in many sizes, standard and widescreen.



## RackView Keyboard

### Foldaway Keyboard Drawer

Keyboard and Mouse  
Standard or short depth  
USB and PS/2 connectors

# Accessories



## Remote Control Keypads

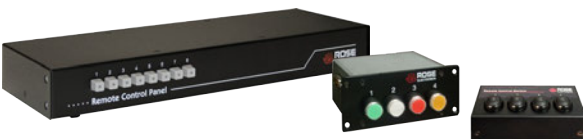
### Versatile KVM Switch Control

80-Key Keypad: 8x10 key array  
24-Key Keypad: 4x6 key array  
4, 8, or 16 single row keysticks  
User-programmable keys  
Functions as a customized control panel



## TransVue HDMI 4K2K Scaler

Upscale and downscale HDMI 4K60 and 1080p  
Splits HDMI input to 2 outputs, one is loop-out and other is scaled  
Supports 4096x2160, 3840x2160, and 1080p video resolutions  
Features HDCP and CEC support



## Remote Control Panel & Remote Control Switches

Control KVM Switches with push buttons through a serial port connection



## Translator VGA to HDMI Converter

### Video Converter/Scaler

Powerful OSD for video adjustments  
Noise reduction and video enhancement  
Stereo and S/PDIF audio input converts to HDMI audio output



Specializing in Connectivity  
of Video, Audio, and USB  
via Fiber, CATx, and IP

**CONTACT US**  
**281-933-7673**  
**SALES@ROSE.COM**

**HEADQUARTERS**  
10707 Stancliff Road  
Houston, Texas 77099  
281-933-7673  
800-333-9343  
sales@rose.com

**NORTHERN EUROPE**  
+49 2454 969442  
germansales@rose.com

**SOUTHERN EUROPE**  
+34 9386 63795  
spainsales@rose.com

**ASIA**  
+65 6324 2322  
asiasales@rose.com

**AUSTRALIA**  
+61 0421 247083  
australiansales@rose.com

Solutions for Broadcast, Command and Control, Data Centers, Digital Signage, Education, Entertainment, Financial, Government, House of Worship, Industrial, Medical, Military, Presentation Venues, Retail, Security, Transportation, and others

**ROSE.COM**