

March 2004

A Monthly Newsletter from Rose Electronics

Product Headlines

Lower Cost, High Quality KVM Access over IP

Houston, TX March 1, 2004 – *With the same high quality video and mouse control of the flagship UltraLink product, the UltraLink Lite offers a lower cost but high quality alternative.*

Ultimate Rack Management: UltraConsole

Houston, TX January 28, 2004 – *Ultra Console, a single user multi-platform KVM Console Switch, is a complete Rack management solution which controls servers, routers, and switches all in one device.*

Rose Extends DVI & VGA 6 miles

Houston, TX February 9, 2004 – *CrystalView Pro fiber KVM Extenders now allow keyboard, digital or analog video, and mouse signals to reach server CPU's up to 6 miles away over fiber.*

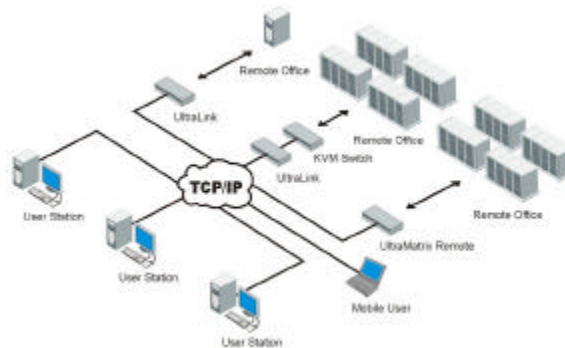
Rose Electronics Introduces... The UltraMatrix Remote

Newest Addition to its KVM Access over IP Product Line

Houston. March 1, 2004 – *Rose Electronics* announces the launch of UltraMatrix Remote, the newest addition to their industry leading line of KVM Access over IP products. A multi-user KVM Matrix console switch with integrated KVM Access over IP, the UltraMatrix Remote breaks down the boundaries of the network allowing multiple users to access 1,000's of network devices wherever they are from anywhere in the world.

The advanced distributed design of UltraMatrix Remote uses networking communication technology internally to reduce cost, eliminate single points of failure, increase reliability and saves critical rack space for more servers.

Since the UltraMatrix Remote is operating system independent and supports any mix of PC, SUN and Serial Devices, the UltraMatrix Remote is the right answer for any network. The Integral serial terminal emulation on the UltraMatrix Remote extends traditional KVM capabilities and enables management and control of any device that has a serial interface (PABX, UPS systems, console access servers, routers).



High quality video is supported up to 1280x1024. The user friendly on-screen display (OSD) menu system that is embedded in the UltraMatrix Remote firmware, provides real-time status reports for all attached servers and allows users to switch between computers. The OSD also allows the system administrator to configure computer names, define devices,

user groups, users, and allocate unique passwords to protected identities, either locally or via Rose's UltraLink Viewer client software.

Available in single, dual and quad user configurations, the Ultramatrix Remote provides BIOS level access for management and administration of a single local datacenter or multiple remote locations. Users can be located local to the servers or at anywhere IP access is available, and both local and remote users can have simultaneous access to the CPU/server resources.

From wherever you are...to wherever you need to be; access, control and manage your servers, routers and switches anywhere in the world, with the Rose Electronics UltraMatrix Remote.

Deploy KVM Extenders in a Rack Mountable Chassis

Houston, TX February 16, 2004 – *The CrystalView Pro fiber and the CrystalView CAT5 are now even more manageable with Rose Electronics' new CrystalView Pro Fiber Rack and the CrystalView CAT5 Rack.*

Upcoming Events

March 18-24
CeBIT
Hannover, Germany

May 11-13
Networkd + Interop
Las Vegas, NV

May 25-27
CeBIT-America
New York, NY

Please Contact us...

HEADQUARTERS-USA
Rose Electronics
10707 Stancliff Road
Houston, TX 77099 USA
Tel 281 933 7673
Fax 281 933 0044
sales@rose.com
www.rose.com

Europe
Tel +44 (0)1264 850574
europesales@rose.com

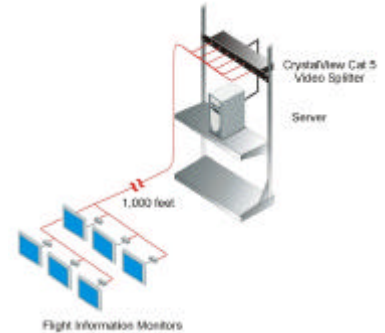
Asia
Singapore
Tel +65 6324 2322
asiapacificsales@rose.com

Australia
Tel +617 3388 1540
australiansales@rose.com
nzsales@rose.com

Selling Points...

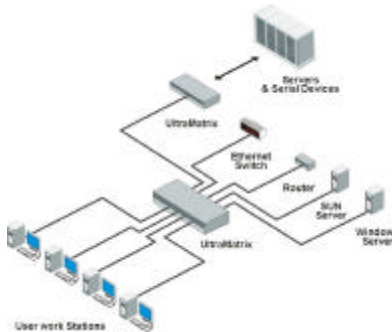
Open New Revenue Source with Airport Solutions

“Have you ever been to an airport without at some point looking for a flight information monitor to check on your flight? They are easy to find because airports have many of them conveniently located throughout their facility. This fact provides a profitable sales opportunity for you as a reseller of Rose Electronics products. With our new **CrystalView CAT5 Video Splitter**, you can now target airports or any other facility that needs to send video from a single source to multiple monitors. The **CrystalView CAT5 Video Splitter** will take video output, split it and send to multiple monitors up to 1,000 feet away over CAT5 cable. The **CrystalView CAT5 Video Splitter** system consists of the local CrystalView Rack and a remote unit for each monitor used. The local unit connects to your computer while the remote unit connects to a video monitor. Give us a call so we can assist you in any way we can to make you a success with the **CrystalView CAT5 Video Splitter**.”



Consolidate Servers, Routers and other Serial Devices in Single KVM Switch

“Your clients need a KVM switch that can integrate the management of both servers and serial devices in a single switch. Both the multi-user **UltraMatrix** and single-user **UltraConsole** are engineered so your clients can configure any port to control a Windows, UNIX or Sun server or a serial device. Customers can now manage all their servers, routers, Ethernet switches and other serial devices with the **UltraMatrix** or **UltraConsole**. In today’s market, customers are attracted to products that give them the best value, features, and benefits for their needs. With its superior quality, robust feature set, durability, expandability, and free life-time firmware upgrades, the **UltraMatrix** and the **UltraConsole** will bring outstanding value to your customers. Give us a call so we can assist you in any way we can to make you a success with the **UltraMatrix** and **UltraConsole**.”



Ask us about...

RackView



KVM Drawer
Available in 15", 17" & 19" models

CrystalView Rack



CAT5 or Fiber KVM Extenders in rack-mountable chassis

UltraLink Lite



Low-Cost/High Quality KVM Access over IP

 **ROSE**
ELECTRONICS
WWW.ROSE.COM
800 333 9343