

# RackView LCD



## Rack mounted TFT/LCD Monitor

1U - High resolution TFT/LCD monitor

HD15, DVI, and S-Video/composite connectors (Depending on model)

Needs only 1U of rack space

Available in 15", 17", and 19"  
(Also a 20" panel mount model)

## Features and Benefits

- Four sizes to choose from:
  - 15" LCD
  - 17" LCD
  - 19" LCD
  - 20" LCD panel mount
- 19" model features HD15 and DVI-D inputs or HD15 and S-Video / Composite inputs
- PiP features using two different video inputs optional on the 20" model
- Front panel controls
- On-screen display for adjusting all settings
- Provides a sharp, clear display
- Easy to install
- Optional KVM or Video switch can be added
- Made in USA

## The RackView™ Advantage . . .

The RackView Monitor models are an innovative space saving design that fits in 1U of rack space.

It can be placed at any height within a standard 19" rack. This offers the operator the maximum viewing comfort and takes up a minimum amount of rack space. The front panel conceals the unit when it is not in use.

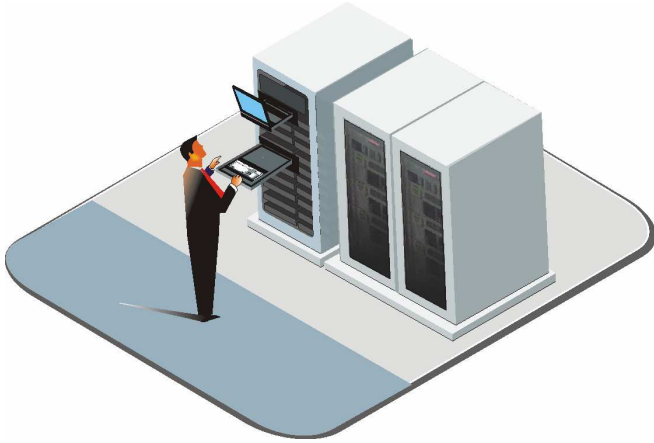
The optional KVM switch offers single or multiple user access to as many as 1,000 servers or computers. A separate keyboard and mouse are needed to fully utilize the KVM switch option. Rose Electronics KVM switch options are fully expandable and when combined with the RackView, your system becomes a versatile, distributed matrix controlled system with multi-user capability, controlled access to the servers, and many other features.

PC's, UNIX, Sun, Apple, and USB computers can easily be connected and monitored locally using the RackView monitors.



1U Rackmount monitor

## Typical Application



**Introduction** The RackView is the perfect addition to your server room. It mounts easily at any height in a standard 19" rack. It slides easily into the rack and out of site when it's not in use. The optional built-in KVM switch capability offers the added convenience of complete access to as many as 1,000 servers or computers. Adding a multi-user KVM switch allows server management to be performed locally from RackView or remotely from multiple KVM workstations.

**Installation** RackView is very easy to install. Simply adjust the rack rail length to the depth of your rack, slide the unit through the rack and secure the rack mount brackets to the rack rails.

**Monitor** The monitor is a high resolution TFT/LCD monitor with front panel controls for adjusting brightness and contrast. The on-screen display menu provides adjustments for all settings.

**PiP feature** The RackView 20" model features optional PiP capability. Connect one video source to the HD15 connector and another to the S-Video input and select the PiP option from the on-screen-menu.

**Options** The RackView can be ordered with an optional KVM switch. It is recommended that the KVM switch be a 1U high, 1 x 4, 1 x 8, 2 x 4, or a 2 x 8 model. The 4U high 4 x 16 KVM switch models can be used but the KVM switch should be mounted in the rack.

## Part Numbers

RV1-LCD15E 1U LCD Drawer, Rack Mounted 15" LCD

RV1-LCD17E 1U LCD Drawer, Rack Mounted 17" LCD

RV1-LCD19E 1U LCD Drawer, Rack Mounted 19" LCD

## Specifications

Dimensions	Depth		Min with Switch	Weight
	Min	Max		
15" models	18.0"	36.00"	24.4"	28lbs
17" models	18.0"	36.00"	26.3"	28lbs
19" models	25.5"	36.00"	31.0"	28lbs

Resolution: 15" – 1024 x 768 @ 75Hz  
17" – 1280 x 1024 @ 75Hz  
19" – 1280 x 1024 @ 75Hz

Colors: 16.7 million

Controls: Front panel

Adjustments: On-Screen

Connectors: 15" / 17" / 20" – HD15  
19" – HD15 & DVI-D or  
HD15 & S-Video / Composite

Power adapter 100-240 VAC 50/60 Hz in /  
+12VDC, 5A out

Environmental 32°F - 122°F (0°- 50° C),  
20%-85% non-condensing RH



Rack Monitor

■ Phone: 281-933-7673 ■ E-mail: sales@rose.com ■

10707 Stancliff Rd. Houston, TX 77099

Rose Electronics – Europe: +49 (0)2454 969442 Rose Electronics – Asia: +65 6324 2322