

# Xtensys



## Features and Benefits

- The distance from the computers to the Xtensys unit and from the unit to the user station can be up to 1,000 feet using standard CATx cabling.
- Auto equalization and skew compensation for a perfect display using CAT5, 5e, 6, or 7 cable.
- Multi-platform support – PS/2, USB, Sun, Unix, Mac, or serial devices.
- Each computer port can be configured for connection to a computer or serial device.
- Advanced security for configuration and access
- Configuration and access through advanced OSD
- Remote access over CATx cable
- Extremely modular architecture for easy expansion and cascading
- Built in high performance video bus to stack units for expansion
- Switch models available with:
  - 0, 2, 4, 8, or 16 users and
  - 4, 8, 16, 32, 48, or 64 CPU ports
- User station models available with:
  - 1 KVM connection and 1 RJ45 link
  - 1 KVM connection and 4 RJ45 links
- Local port for quick access to the switch
- Rack mount kits available for a 19" rack
- Lifetime free flash upgrades
- Designed and manufactured in USA

## CAT5 KVM Switch

- Extend the distance from the computers to the user stations up to 1,000 feet using CATx cabling
- Configure any port for CATx or serial devices
- Modular architecture and built-in high performance video bus for easy expansion
- Auto equalization and skew on UTP cable for video up to 1920 x 1440
- Cascade units for additional expansion
- Models available for 0 – 16 users and 1 - 64 CPUs
- Space saving Micro-Mini KVM Transmitter
- Advanced security features

## The Xtensys™ Advantage . . .

Leave it to Rose to come up with such a feature packed product. The Xtensys CAT5 KVM switch features the latest in technology and can be deployed and scaled to any computer environment from the simplest to the most complex.

You can connect either a miniature Rose KVM transmitter or a serial cable to the RJ45 computer input connectors on the unit. It auto-detects the interface. If video is present it will automatically measure the distance and equalize the video for maximum clarity.

At the user side you connect a KVM user station to access any computer. The built in OSD and hot-key system allows you to select a computer using simple keyboard commands or from a sortable list and switch to it instantly.

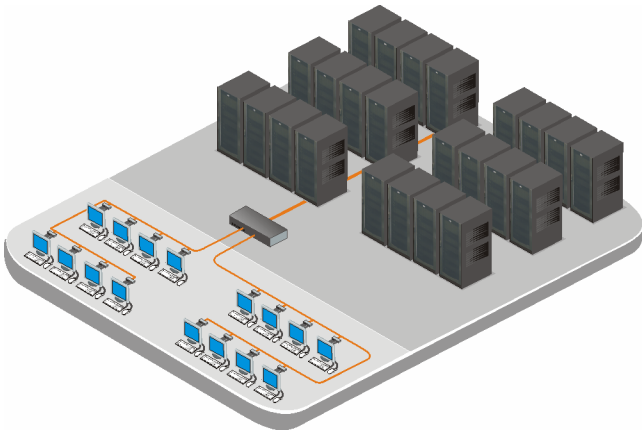
The XTR-11 user station connects a single KVM station to a single KVM port on an Xtensys switch. For the ultimate in connection flexibility, the XTR-14 user station permits a single KVM station to connect to a KVM port on four different Xtensys switches, four standalone servers/computers, or a combination of Xtensys switches and standalone computers/servers.

As the inventors of the KVM switch, Rose continues to provide leading solutions for your server management needs. With headquarters in the US and offices in Europe and Asia, Rose provides a full range of capabilities and support. Call us today for more information about this and other Rose products.



Direct connect CAT5 Transmitter streamlines your installation

## Typical Application



**Cables...** All cabling to the user stations and computers uses standard CATx cable. Max cumulative cable length of 1,000'

**Installation...** Xtensys is easy to install and configure. For a single unit installation, you simply connect your computers to the CPU ports; connect the KVM consoles to the user stations, connect the user stations to the Xtensys switch and it's ready for operation. If access to additional computers is needed, up to 8 units can be daisy chained together. This provides access to as many as 256 computers and 64 users. In addition to being able to daisy chain the units together, each unit's CPU port can be cascaded to a KVM switch providing access to thousands of computers or servers.

**Security...** There are three levels of security available to customize access to the unit and to the connected computers. Up to 6 security profiles can be added to each unit. One system administrator, one administrator, and 4 user accounts can be set-up for each unit. The system administrator has security privileges for the complete system. He assigns passwords and access rights for administrators and all users for the complete system. The administrator can perform security functions for a single unit. Users can be assigned a password and must login to obtain access to the computers.

**Operation...** From each user console, you can access any connected computer by simple keyboard commands or use an on-screen list of the computers to access. When connected, the user can fully utilize all applications and features of the connected computer.

**Keyboard and Mouse...** Xtensys fully emulates the keyboard and mouse, so computers can be booted at any time. A "Keep Alive" feature ensures that the keyboard and mouse will function properly even if the switch temporarily loses power.

**On-Screen display...** The on-screen display is a menu-driven display for configuring the unit, setting up security access, and for quick and easy access to the connected computers. You can use either the keyboard to highlight a feature on the OSD and press enter or use the mouse and click on that feature.

**Firmware update...** The firmware upgrade utility is a windows based program that provides an automated process for upgrading the unit's firmware. New firmware upgrades are available from our web site.

### Part Numbers

**Xtensys Switch** XTS-VaXbDc-L  
 a = Remote Users (0, 2, 4, 8, 16)  
 (0 = 0 remote users, 1 local user)  
 b = CPUs (4, 8, 16, 32, 48, 64)  
 c = Controller Cards ( 4, 8, 12, 16 )  
 -L = Local PS2 KVM ports (Standard)  
 -LU = Local PS2+USB KVM ports (Optional)

### User KVM Stations

XTR-11 1X1 User KVM Station (VGA-PS/2)  
 XTR-11-U 1X1 User KVM Station (VGA-USB/PS/2)  
 XTR-14 1X4 User KVM Station (VGA-PS/2)  
 XTR-14-U 1X4 User KVM Station (VGA-USB/PS/2)  
 TFR-05D500FSUB-2.1 Universal power adapter (110-240V-5V)

### CATx Transmitters

XTT-MP UTP Transmitter (VGA/PS/2)  
 XTT-MP2 UTP Transmitter (VGA/PS/2-RJ45)  
 XTT-MU UTP Transmitter (VGA/USB)  
 XTT-MPU UTP Transmitter (VGA/PS2 & USB)

### Rack Mount Brackets

RM-UB19 1U switch (X8, X16, X32)  
 RM-UC19 2U switch (X48, X64)  
 RM-UM19 User Station

### Specifications

Dimensions	Width	Depth	Height
1U Model	17" / 43.2 cm	6.75" / 17.1 cm	1.75" / 4.4 cm
2U Model	17" / 43.2 cm	6.75" / 17.1 cm	3.5" / 8.9 cm
User Station	8.75" / 22.2 cm	5.65" / 36.4 cm	1.75" / 4.4 cm

**Weight** Xtensys 6 – 9.9 lbs / 2.7 – 4.5 kg  
 User station 2 – 3 lbs / 0.9 – 1.4 kg

**Power** 120 – 230 VAC / 150 Watts

**Resolution** Up to 1920 x 1440

**Environmental** 0 – 50° C, 0% – 80% non-condensing R.H.

**Connectors** Power: IEC 320 standard receptacle  
 CPU/Remote: KVM: RJ45  
 Local KVM: MD6, HD15, USB  
 Expansion: RJ45

**Keyboard / Mouse** PS/2, Sun, USB (PC, Sun, Mac)

**Chassis** Metal

**Scan Interval** 0 – 255 seconds

**Indicators** On-Line / selected LEDs / Power

**Switches** IEC 320 Power



■ **Phone: 281-933-7673** ■ **E-mail: sales@rose.com** ■

10707 Stancliff Rd. Houston, TX 77099

Rose Electronics – Europe: +49 (0)2454 969442 Rose Electronics – Asia: +65 6324 2322

DS-XS-2.9

© Copyright 2006 Rose Electronics. All rights reserved



WWW.ROSE.COM