



rose electronics. smart choice.

Short Form Catalog Fall 2013

Multi-User KVM Switches	2
Single Output Switches	3
AV Matrix Switches	3
KVM IP and Sharing	3
VGA CATx Extenders	4
DVI-HDMI CATx Extenders	5
USB 2.0 CATx Extenders	5
Fiber Extenders	5
Multiviewers	6
Video Wall Controllers	6
Video Splitters	7
Accessories	7
KVM Rack Drawers	7
New Products	Back Cover



www.rose.com

rose electronics switches. forward thinking.

Whether you require KVM matrix switches, audio/video switches, multi-head video switches, KVM-IP, or other products, Rose has a solution for your application.



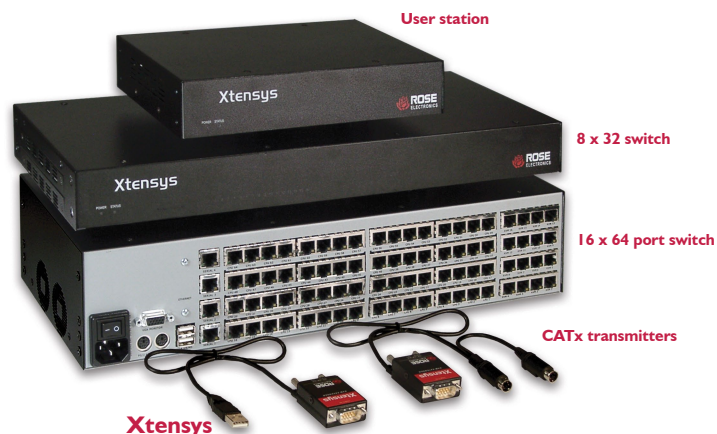
KVM matrix switch either CATx or fiber – 48-288 ports

Available in four sizes: 48, 80, 160, and 288 ports
 Modular chassis accepts 8-port I/O cards
 Extend computers and KVM stations to 450' (140m) on CATx cable, 33,000' (10km) on fiber
 Each switch port can be an input or output
 DVI video resolution up to 1920x1200
 Options: VGA input, USB 2.0, analog or digital audio, serial, and redundant power



Compact CATx DVI and KVM matrix switch – 8-80 ports

Compact version of Orion-X switch available as CATx only
 Available in six sizes: 8, 16, 32, 48, 64, and 80 ports
 Extend computers and KVM stations up to 450' (140m) over CATx cable
 Each switch port can be an input or output
 DVI video resolution up to 1920x1200
 Options: VGA input, USB 2.0, analog or digital audio, serial, and redundant power



CATx KVM Matrix Switch family

Connect multiple users to multiple computers using CATx cable
 Auto equalization and skew compensation for a perfect VGA display
 Each computer port can connect to a computer or serial device
 Advanced security features
 Configuration and access through OSD
 Models for 1-16 users and 1-64 CPUs



2 - 4 user KVM matrix switch

VGA up to 1920x1200 and PS/2 or USB keyboard and mouse
 Up to 4 users can access and control up to 1,000 computers and network devices
 Fixed port configurations and plug-in expansion ensures low system cost
 Plug-in expansion cards make the system versatile and easy to expand and maintain
 Switching can be done from hot-key, OSD, or serial port
 Flash memory, advanced OSD, security, and many other features



Vista DVI Plus
4-port model

Vista DVI
8-port model

Vista DVI Plus
8-port model

Single user KVM Switch for DVI/VGA and USB

Both single-link DVI and dual-link DVI models are available

Single-link DVI resolution up to 1920x1200, dual-link DVI resolution up to 2560x1600

Analog VGA resolution up to 2048x1536

USB 2.0 high speed device support and USB keyboard and mouse emulation

Stereo audio speakers, microphone support on single-link unit only

Switch from front panel, serial port, hot-key, or OSD on dual-link unit only



MultiVideo

MultiVideo DVI

Single user multi-head KVM Switch for DVI, VGA, USB, and PS/2

Dual-link DVI resolution up to 2560x1600, analog resolution up to 1920x1200

Available in dual-head and quad-head (tri-head available in DVI model)

VGA model supports PS/2 or USB, DVI model supports USB only

USB 2.0 high speed device support on DVI version

Can be switched from front panel, hot-key, serial port, or OSD on VGA unit only

Support stereo audio speakers



UltraMatrix AV DVI
16 x 16 model

UltraMatrix AV DVI
8 x 8 model

DVI Matrix Switch 4x4, 8x8, and 16x16

Switch single-link DVI video from any input to any output

Available as 4x4, 8x8, or 16x16 models

Video resolution up to 1920x1200

Select and view connection source and destination from front panel

Switch from front panel or RS232 port using control software provided with unit

Optional Ethernet interface for control over network



MultiStation CATx

MultiStation

Dual KVM to one computer over CATx or dual/quad standalone model

Multiple users share one computer with VGA video and PS/2 or USB keyboard and mouse

CATx model has transmitter at computer and a receiver at each of two KVM stations

connected with up to 1000' (300m) of CATx cable

Automatic video compensation/equalization with optional skew adjustments

Standard model has KVM stations and computer all connected to unit with KVM cables

and supports either two or four KVM stations, USB keyboard and mouse with adapter only



UltraConsole

UltraView Pro

Single user KVM Switch for VGA and PS/2 or USB

Analog video resolution up to 1920x1200

User can connect up to 256 computers

Optional audio and touch screen support on UltraView Pro

UltraConsole model supports VT220 emulation for connecting to serial device

Units can be linked together to form multi-head video and for expansion

Switching can be done from front panel, serial port, hot-key, or OSD



Vista AV
16 port model

Vista AV
8 port model

Multiple DVI inputs to one DVI output

Video resolution up to 1920x1200

2, 4, 8, or 16 in to 1 output

Switch from front panel push buttons, serial commands, or optional infrared

DVI output is capable of driving cable lengths up to 25' (7m)

Front panel display indicates the active selection

Built-in DDC learning mode simplifies operation



UltraMatrix AV VGA
16 x 16 model

UltraMatrix AV VGA
8 x 8 model

Audio/VGA Matrix Switch – 8x8 and 16x16

Switch video and stereo audio from any input to any output

Audio and video can be switched in tandem or separately

Video resolution up to 1600x1200

Supports separate sync, composite sync, or sync-on-green

Built-in macro player/recorder for controlling video and audio switching

Optional Ethernet interface for control over network



UltraConsole Remote 2

UltraLink 2

Multiple computer or single computer KVM-IP access

UltraConsole Remote 2 connects up to 1000 computers with local port for dual access

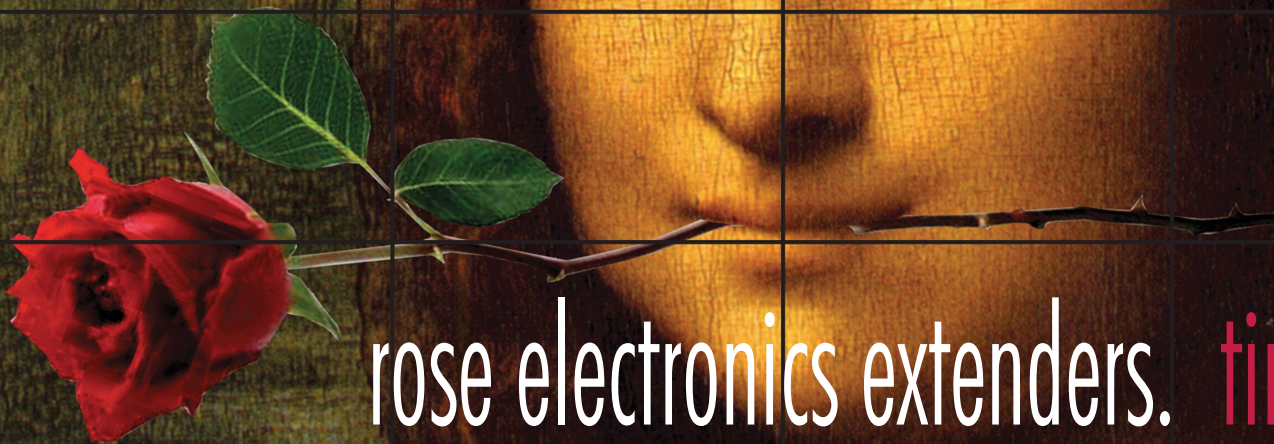
UltraLink 2 connects to a single computer with optional local port for dual access

Browser-based or VNC program to remotely access computers over IP

Responsive, real-time mouse control, secure encrypted operation

VGA Video resolution up to 1600x1200, UltraLink 2 is also available

in DVI version with resolution up to 1920x1200



rose electronics extenders. timeless.

Rose has one of the largest line of extenders in the industry. If you don't see what you need, please call our knowledgeable sales staff - 800-333-9343.

CrystalView USB2
Multi-head VGA with USB 2.0



ViewLink CATx USB

ViewLink CATx PS/2



CrystalView Mini



CrystalView Mini USB

VGA, PS/2, USB extender with auto adjustments to 1,000' (300m)

ViewLink video resolution up to 1920x1200 at 300' (90m), 1024x768 at 1,000' (300m)

Either USB or PS/2 with optional touch screen feature, also available as video only

CrystalView model is multi-head with USB 2.0, resolution up to 1920x1200 at 150' (45m)

Automatic equalization provides clear video over any type of CATx cable

Optional automated video skew adjustments adjusts for cable skew properties

Keyboard and mouse emulation assures smooth operation

VGA, PS/2, USB, audio, serial extender to 150' (45m)

Video resolution up to 1600x1200 at 100' (30m), 1024x768 at 150' (45m)

Separate models support PS/2 or USB keyboard and mouse

Two video settings for configuration based on cable length

USB model supports USB 1.1 peripherals and has integrated 4-port USB hub

Optional stereo speakers, microphone, and serial extension

Optional dual-head video feature



CrystalView CATx Rack

CrystalView CATx



CrystalView Plus



CrystalView Plus USB

VGA, PS/2, USB, audio, serial extender to 1000' (300m)

Video resolution up to 1600x1200 at 200' (60m), 1024x768 at 1,000' (300m)

Separate models support PS/2 or USB keyboard/mouse

Video equalization and gain controls are done via front panel knobs

Keyboard and mouse emulation assures smooth operation

Optional local port for dual access to computer at either side of extension

Optional stereo speakers, microphone, and serial extension

VGA, PS/2, USB, audio, serial extender to 1000' (300m) - improved video

Video resolution up to 1600x1200 at 650' (200m), 1280x1024 at 1,000' (300m)

Separate models support PS/2 or USB keyboard and mouse

Video adjustments of equalization and skew are done via keyboard commands

USB model supports USB 1.1 peripherals and has integrated 4-port USB hub

Optional stereo speakers, microphone, and serial extension

Optional dual-head video feature



CrystalView EX5 DVI



CrystalView EX5 HDMI

Uncompressed 1920 x 1200 video + USB 2.0 to 330' (100m)

Uncompressed video resolution up to 1920x1200

Extends video and USB 2.0 up to 330' (100m)

HDMI model supports 36-bit color and CEC/HDCP pass-through

Both models have 3 high speed USB 2.0 device ports supplying 500ma power

USB 2.0 throughput of up to 30 MB/sec

Audio support via USB or HDMI



CrystalView DVI Mini



CrystalView DVI CATx

DVI, keyboard/mouse, USB HID, USB 2.0, audio, and serial

DVI Mini model extends uncompressed video at 1920x1200 up to 130' (40m) and

can be ordered with a USB 2.0 option, keyboard and mouse is USB only

DVI CATx model extends compressed video at 1920x1200 up to 400' (120m)

Either USB or PS/2 keyboard/mouse, local port for remote or local access

Optional serial and stereo speakers/microphone

Both models offer optional dual-head video



CrystalView EX
Up to 1640'

CrystalView Extreme
Connects to LAN

CrystalLink USB2 CATx
USB 2.0 over CATx

Compressed 1680 x 1050 video + USB 2.0 to 1640' (500m) or by LAN

CrystalView EX is point to point and extends up to 1,640' (500m) over CATx

CrystalView Extreme is multi-point by using a 1GB Ethernet network for transport

CrystalLink USB 2.0 has no video and extends USB 2.0 to 330' (100m)

All models have 3-4 high speed USB 2.0 device ports supplying 500ma power

USB 2.0 throughput: EX=80 MB/sec; Extreme/CrystalLink=480 MB/sec

CrystalView audio at host via USB and at remote via 3.5mm headphone/mic jacks



CrystalView EX5 Quad

CrystalView DVI Quad
CATx or fiber

Multi-head DVI, keyboard/mouse, USB 2.0, audio, and serial

EX5 Quad model extends uncompressed video of up to 1920x1200 to 330' (100m)

USB keyboard/mouse + 3 ports of high-speed USB 2.0 supplying 500ma power

Optional dedicated audio serial channel or Windows USB Media

DVI Quad model extends compressed video of up to 1920x1200 to 400' (120m)

Both USB and PS/2 keyboard/mouse, local ports for remote or local access

Optional serial and stereo speakers/microphone and fiber optic link interface



CrystalView DVI Fiber



CrystalView DVI Plus

Compressed or uncompressed DVI KVM fiber extender

CrystalView DVI Fiber model extends compressed video at 1920x1200

to 1,300' (400m) over multi-mode and 33,000' (10km) over single-mode cable

PS/2 or USB keyboard/mouse, local port, optional serial, stereo speakers, and microphone

CrystalView DVI Plus extends uncompressed video either single-link DVI at 1920x1200

or dual-link DVI at 2560x2048 to 1300' (400m) over multi-mode cable

USB keyboard/mouse, optional USB 2.0, serial, stereo speakers, and microphone



CrystalView Pro Fiber Rack

CrystalView Pro Fiber

VGA/DVI KVM fiber extender standalone units or rack mount chassis

Separate models for PS/2 or USB keyboard/mouse

Supports DVI and VGA video at resolutions up to 1600x1200 (1920x1200 option)

Multi-mode models extend up to 1,640' (500m) over OM3 cable

Single-mode models extend distance up to 33,000' (10km)

Optional audio and serial extension

Rack can hold up to 10 CrystalView Pro fiber transmitters or receivers



CrystalLink USB2 Fiber
USB 2.0 over duplex fiber

CrystalView DVI Micro
Single-link DVI over single fiber

CrystalView DVI Micro DL
Dual-link DVI over duplex fiber

DVI single-link or dual-link only or USB 2.0 over fiber

Single-link DVI model: one multi-mode fiber, resolution up to 1920x1200 at 1,000' (300m)

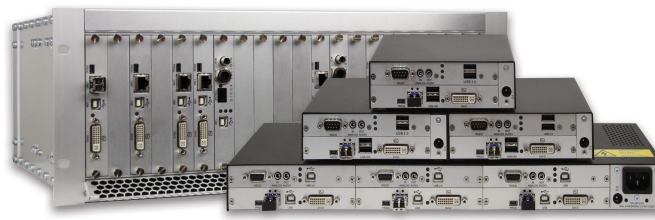
Dual-link DVI model: two multi-mode fibers, resolution up to 2560x2048 at 1,000' (300m)

CrystalLink extends USB 2.0 only, multi-mode to 1,640' (500m), single-mode to 33,000' (10km)

Four high speed device ports supply 500ma power and throughput of 480 MB/sec

DVI Micro models are multi-mode with SC connectors, CrystalLink model uses LC connectors

DVI EDID information can be learned and saved from any monitor



Orion XTender
21 card chassis

Orion XTender
2, 4, and 6 card chassis

Versatile KVM fiber/CATx extender system

Available as 2 card, 4 card, 6 card, or 21 card chassis

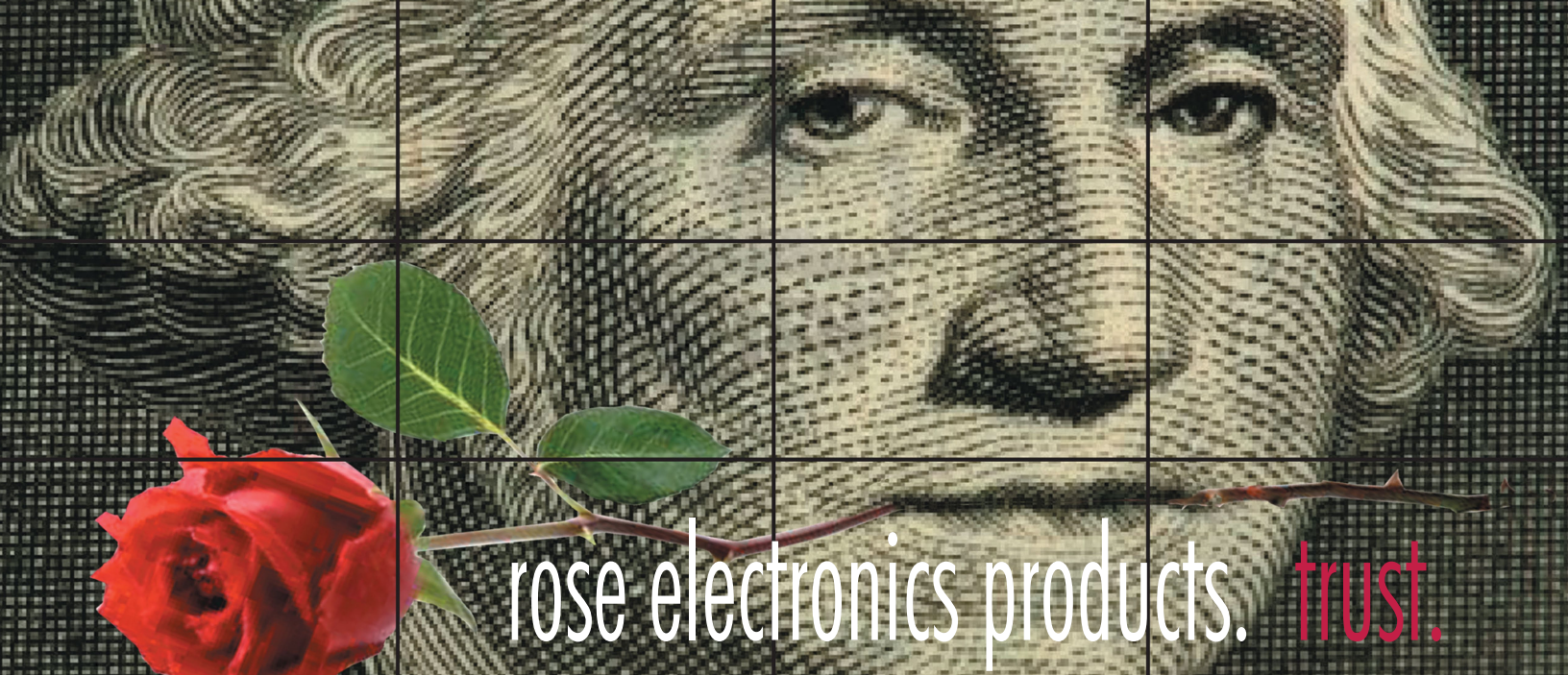
Extends signals up to 460' (140m) over CATx, 3,300' (1km) over OM3 multi-mode,

and 33,000' (10km) over single-mode

Supports DVI-D video resolution up to 2048x1152

Base models use DVI video and USB keyboard and mouse

Options: VGA input, USB 2.0, analog or digital audio, serial



Rose has a wide range of flexible products and custom services to meet your needs from the simplest to the most complex.



QuadraVista HDMI

Multiviewer - Scale four HDMI sources to a single monitor

Connect four DVI or HDMI sources with PS/2 or USB keyboard/mouse
Display video sources in quad, PiP, full, or windowed mode with name of source
Switch a USB 2.0 device, speaker, and microphone from any computer
Can be controlled from keyboard, mouse, USB, serial port, touchscreen, or network
Built-in stereo speakers, separate audio and microphone inputs
Four USB 2.0 ports for printers, memory sticks, and other high speed devices



QuadraVista QF

Multiviewer - Scale four DVI/VGA sources to a single monitor

Connect four VGA, DVI, or HDMI sources with PS/2 or USB keyboard/mouse
Display video sources in quad, PiP, full, or windowed mode with name of source
Switch a USB 2.0 device or Dolby 7.1 output from any computer
Can be controlled from keyboard, mouse, front panel, USB, serial port, or touchscreen
Audio input from HDMI sources, digital and analog audio output
Four USB 2.0 ports for printers, memory sticks, and other high speed devices



UltraVista Plus

Video wall controller - 4 outputs in any format

DVI input can be single-link up to 1920x1200
or dual-link up to 2560x2048 60 Hz or higher at reduced frame rates
Output monitors can be DVI or VGA
Configuration utility via USB allows for easy control of cropping, scaling, rotation, and gap compensation
Gen-locked output ensures smooth display output



UltraVista SX

Video wall controller - Fixed 2 x 2 output format

Single-link DVI input video resolution up to 1920x1200
Output monitors can be DVI or VGA
EDID learning mode simplifies installation
Front panel LCD simplifies setup and operation
Compatible with all DVI video sources
Plug and play features ensure smooth installation and operation



VideoSplitter VGA

VideoSplitter DVI

One video source to multiple monitors

Resolution up to 1920 x 1200

Models available with 2, 4, or 8, or outputs, VGA model can be ordered with 16 outputs

VGA unit has HD15 connectors, DVI model has DVI connectors

VGA unit has blanking control and optional 2nd input switchable from front panel

DVI model will switch both analog VGA and digital DVI

Units can be cascaded to gain more outputs



Remote Control Keypad and Stick



Remote Control Panel



Remote Control Switch

Control your KVM switches with the ease of a pushbutton

Simplifies operation of your KVM switches or other equipment

Two styles – 1: Pushbuttons for either a 1U rack or external mounting and 2: Keypad/Stick

Pushbuttons have a serial port which connects to a compatible KVM switch

and are used exclusively to switch a port on a KVM switch

Keypads/sticks have PS/2 or USB ports which are connected in-line with the keyboard

and are programmable to send any sequence of keys from a single press



CrystalView DVI Multi

Connects one DVI source to 2-4 monitors over CATx cable

Resolution up to 1920x1200

Monitor can be up to 220" (65m) away

Local port on transmitter unit allows viewing video at source

Small receiver unit is installed for each monitor

EDID read from local monitor is stored in flash memory

Compatible with all DVI sources



VGA to DVI Converter

Converts video from VGA TO DVI

Resolution up to 1920x1200

HD15 male in, DVI female out

HDCP compliant

Built-in OSD function simplifies setup



DVI to VGA Converter

Converts video from DVI to VGA

Resolution up to 1920x1080

DVI female in, HD15 male out

HDCP compliant

Optional external power



Composite or S-video to VGA Converter

Converts composite video/S-video to VGA

Switches 3 inputs: VGA, composite, and S-video

Output resolution up to 1280 x 1024

BNC input for composite, mini-din4 for S-video

Built-in OSD function simplifies setup



RackView



RackView 20"



RackView Widescreen



RackView High Resolution

1U KVM Drawer 15", 17", 19"

Resolution up to 1280x1024 - VGA or DVI

USB or PS/2 keyboard/mouse interface

On-screen menu for easy adjustments

Drawer can be locked to prevent access

Optional KVM switch, audio, trackball, international keyboard layout, DC power

1U KVM Drawer 20"

Resolution up to 1600x1200 - VGA or DVI

Front mount USB port, audio speakers

USB or PS/2 keyboard/mouse interface

On-screen menu for easy adjustments

Drawer can be locked to prevent access

Optional international KB layout, DC power

1U KVM Drawer 17", 19" Widescreen

Resolution up to 1920x1080 - VGA or DVI

USB keyboard/mouse interface

On-screen menu and PiP

Optional KVM switch, audio, trackball, Apple/Sun/international keyboard layout, SDI, HDMI, composite, S-video, DC power

1U KVM Drawer 17" High Resolution

Resolution up to 1920x1200 - VGA or DVI

USB keyboard/mouse interface

On-screen menu for easy adjustments

Optional KVM switch, audio, trackball,

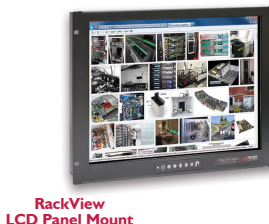
Apple/Sun/international keyboard layout, SDI, HDMI, composite, S-video, DC power



RackView Dual Rail



RackView LCD Monitor



RackView LCD Panel Mount



RackView Keyboard

1U KVM Dual Rail Drawer 15", 17", 19"

Independent slide of keyboard and LCD

Resolution up to 1280x1024 - VGA or DVI

USB or PS/2 keyboard/mouse interface

Can be locked, on-screen menu

Optional KVM switch, audio, trackball, international keyboard layout, DC power

1U LCD Drawer 15", 17", 19", 20"

VGA or DVI video input resolutions up to:

15" 1024x768 17/19" 1280x1024

19" wide 1440x900 20" 1600x1200

On-screen menu for easy adjustments

Optional touchscreen, composite video in, S-video in, audio, NEMA 4/IP65

Panel mount 15", 17", 19", 20", 22"

VGA or DVI video input resolutions up to:

15" 1024x768 17/19" 1280x1024

19" wide 1440x900 20" 1600x1200

22" wide 1680x1050

Optional touchscreen, composite video in, S-video in, audio, NEMA 4/IP65

1U Keyboard Drawer

Full size 106 key keyboard

Separate numeric keypad

Touchpad style mouse

PS/2 or USB keyboard/mouse interfaces

Optional international keyboard layout

Optional KVM switch

New Products.



CrystalLink USB3

USB 3.0 Fiber Extender

Supports USB3.0 throughput up to 5Gbps
Industrial locking connectors for USB and power
Uses one duplex LC multi-mode fiber
Integrated 2-port USB hub
Plug-and-play product, no drivers or jumpers



UltraMatrix AV HDMI 16 x 16

HDMI 16 x 16 Matrix Switch

Switch HDMI from any input to any output
Video resolution up to 1920 x 1200
Select and view connection source and destination from front panel
Switch from front panel, RS232 port, or network using control software provided with unit



Solutions for Broadcast, Control Room, Conference Room, Data Center, Digital Signage, Educational, Entertainment, Financial, Industrial, Medical, Military, Security, Transportation

WWW.ROSE.COM sales@rose.com (800) 333-9343

Rose USA (281) 933-7673 Rose Europe +49 (0) 2454 969442 Rose Asia +65 6324 2322 Rose Australia +61 (0) 421 247083

Rose Electronics 10707 Standcliff Road Houston, Texas 77099

