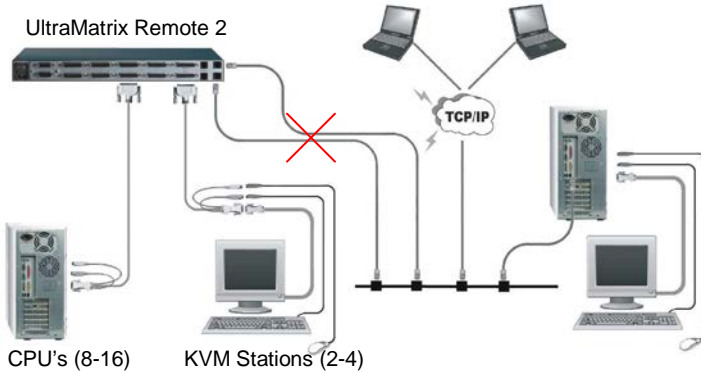


# UltraMatrix Remote 2

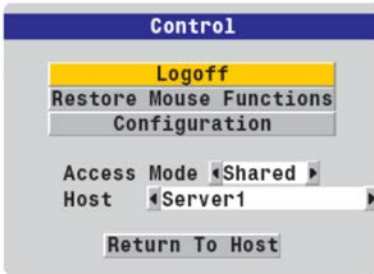
## QuickStart Guide

Configuring the UltraMatrix Remote 2 IP Input modules

- Make all cable connections to the local KVM stations and computers, connect to the network after the assigned unit IP address has been entered and saved.



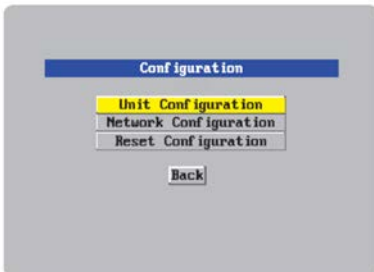
- Each IP input module must be configured. Start with KVM #1 and configure IP input module #1. switch to the next KVM port and configure that and all other IP input modules
- Make sure power is applied to all devices (Computer, UltraMatrix Remote 2, and Monitor)
- Make sure a computer is connected to CPU port #1 and that computer is powered on. If no computer is connected to port #1, the OSD menu screens may not sync
- With power applied, a standard login screen will display on the KVM monitor. Login on using the default user ID, **admin** and no password
- After a successful login, the remote computer's video will display.
- Press the CTRL + ALT + C keys simultaneously to display the control menu options as shown below:



The Control menu allows you to:

- Logoff
- Restore Mouse Functions
- Configuration
- Access Mode
- Host
- Return to Host

Select "Configuration" and press enter to display the configuration menu



The Configuration menu allows you to configure the Unit, Network, or reset the configuration to factory defaults.

Select (highlight) Unit Configuration and press enter.

The Unit configuration screen will display as shown



Selecting the Unit Configuration allows you to define the Unit setup details such as the keyboard layout, admin password, time and date, and encryption.

Enter the information and then click on “Save”

### **Hardware and Firmware**

The versions for the unit are displayed in these fields. Data can not be changed.

### **Keyboard Layout**

Using the left and right arrow keys, select the keyboard type expected from the host computers.

### **Admin password**

Enter an admin password (6 characters, mix of letters and numerals) The background color is initially red to indicate that the password is not sufficient. When a password with reasonable strength has been entered it changes to blue.

### **Unit Name**

The name entered here will be displayed on the local menus and the remote VNC/browser windows.

### **Hot Keys**

Use the left and right arrow keys to select an appropriate hot key sequence for the locally connected keyboard. This sequence is used in combination with other key presses to access the on-screen menus. The options are: Ctrl+Alt (default), Ctrl+Shift, Alt+Shift, Alt Gr, Left + Right Alt, Left Ctrl + Alt or Right Ctrl + Alt.

### **Screensaver**

Use the left and right arrow keys to select an appropriate period of inactivity on the local keyboard or mouse before a screensaver is displayed and the user is logged out. This setting applies to local users only and once the screensaver is displayed, for security purposes the user is required to log in again. The timeout period can be selected between 5 minutes and 1 day (24 hours), it cannot be disabled.

### **Time and Date**

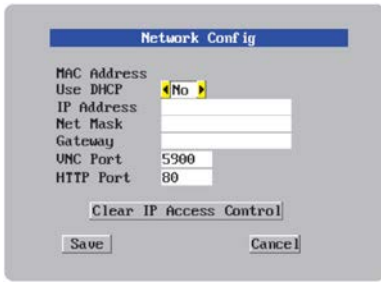
Use the left and right arrow keys to select the correct time and date. The time entry uses the 24 hour clock notation. The internal real time clock will continue to run for roughly one week without power to the UltraMatrix Remote 2, after that it will be lost and require resetting. Use the up and down arrow keys to move between each of the sections within the time and date entries.

### **Encryption**

Arrange this setting according to your security requirements. Three options are available: Always on, prefer off, and prefer on.

When all information has been entered click on “Save” to save the information and return to the control menu.

From the Configuration menu, select (highlight) Network configuration and press enter to display the network configuration menu.



Network Config

MAC Address  
Use DHCP  No  Yes  
IP Address  
Net Mask  
Gateway  
UNC Port 5900  
HTTP Port 80

Clear IP Access Control

Save Cancel

The network information entered should be compatible with the existing network UltraMatrix Remote 2 will be installed on. Your network administrator should assign a unique IP address, network mask, and gateway information for the IP Input module.

### MAC address

Media Access Control Address – this is the unique and unchangeable code that was hard coded within your UltraMatrix Remote 2 unit when it was built. It consists of two 6-digit hexadecimal (base 16) numbers separated by colons. A section of the MAC address identifies the manufacturer, while the remainder is effectively the unique electronic serial number of your particular unit.

### Use DHCP/IP address/Net Mask/Gateway/VNC port/HTTP Port

1. You need to either set the DHCP to 'Yes' or manually enter a valid IP address, Net mask and Gateway. If you set the option to use DHCP, remote users must be informed of the IP address assigned so they can remotely access the unit.
2. Change the IP Address to the IP address assigned to the IP Input module by your network administrator that is compatible with your network.
3. Change the Net Mask and Gateway addresses if needed.
4. The VNC and HTTP ports should remain set to 5900 and 80, respectively, unless they clash with an existing setup within the network.
5. When all network information has been entered, click on "Save" to save the information. The unit will restart and then display the "Secure Keys" menu.



Secure Keys

Random data is required to generate encryption keys for secure UNC access. Please move the mouse or press keys until the bar becomes full.

The Secure keys screen uses mouse movements and keyboard inputs to create random data. This unpredictable information is then combined with several other factors to develop the basis of the encryption keys that are used to establish secure remote links.

With every mouse move and key press the single dash will move across the progression bar (unless the same key is pressed repeatedly). Periodically, a new star character will be added to the bar as the random data are accepted as part of the new encryption key. When the bar is full, the final encryption keys for your UltraMatrix Remote 2 will be created – this process takes roughly 30 to 40 seconds.

Once the secure key has been calculated, the UltraMatrix Remote 2 will restart and present a standard logon screen.

## Remote Configuration and connection

When all IP input modules have been configured with the Unit and Network information, connect the UltraMatrix Remote 2 unit to your network. Use a standard network cable. From a network workstation start a web browser like IE or Netscape from any remote workstation connected to the network your UltraMatrix Remote 2 is connected to. In the URL field, type in the UltraMatrix Remote 2's assigned IP address. (Example (<http://168.192.0.41>)). The UltraMatrix Remote 2 will respond with the below screen in the browser window.



The three options to select from are:

1. Connect using built-in Java VNC Viewer
2. Download Windows VNC Viewer from unit
3. Download latest VNC Version from realvnc.com

Click on the "Connect using built-in Java VNC viewer" option and the UltraMatrix 2 will install the Java applet and then display the logon screen. Enter the UserID of "admin" and assigned password. Upon validation, the connected computer's video will display in the VNC viewer window.

You now have complete access and control over the connected computer or device. All allowable features and functions can be performed as if you were directly connected to the device.

Repeat this configuration procedure for all IP Input modules using their assigned IP address.

In the upper right corner of the window is a "Configure" tab. Click on this tab to display the remote configuration option menu as shown below.



The remote configuration menu allows the administrator to configure all parameters for the unit, network, and other items. Selecting each tab displays that configuration menu.

Refer to the installation and operations manual for a detailed description and examples of each selection.